



YUHUAN CNC MACHINE TOOL CO., LTD

+86 18774862105

www.yh-cn.com

lyw@yh-cn.com

No.9 Yongyang Road, Liuyang High-Tech Industrial Zone, Changsha City,
Hunan Province, 410323. P.R.China



Achieve cutting-edge
manufacturing and revitalize
national industry

Precision grinding and intelligent manufacturing technology Comprehensive solution



COMPANY PROFILE >>>

Hunan Yuhuan Precision Manufacturing Co., Ltd., a high-tech enterprise under Yuhuan CNC (Stock Code: 002903), specializes in the R&D, design, production, and sales of high-precision vertical compound grinding machines, vertical grinding centers, high-precision horizontal compound grinding machines, high-precision horizontal spindle rotary table grinders, industry-specific grinding machines, and key functional components for high-precision machine tools. The company provides customers with precise grinding solutions.

Its products are widely used in aerospace, rail transportation, machine tool manufacturing, automotive components, semiconductor industry, and other fields requiring high-precision grinding processes.



HIGH-PRECISION VERTICAL GRINDING SOLUTION VG-DVG-CVG SERIES



HUNAN YUHUAN PRECISION MANUFACTURING CO., LTD.

Company address: No. 4 Yingxia Road, Changsha Economic and Technological
Development Zone Changsha City, Hunan Province, P.R.China

Service telephone: 0086-731-82877005

Company email: hnyhjm@hnyhjm.com

Company website: www.yh-cn.com, www.yhcnmachine.com



Video Number



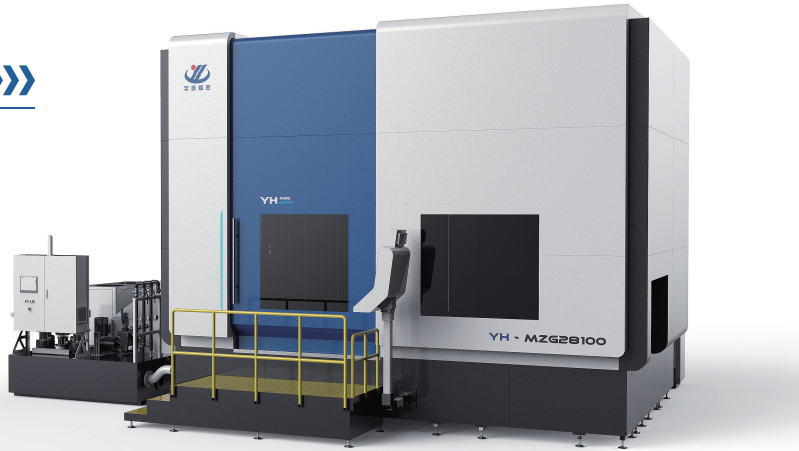
WeChat official account



YUHUAN CNC MACHINE TOOL CO.,LTD.

HIGH-PRECISION VERTICAL GRINDING SOLUTION (VG – DVG – CVG)

Widely used in aerospace, rail transit, machine tool manufacturing, automotive parts, shipbuilding, semiconductor industry, and other fields, it requires high precision and high surface quality for parts processing. It can achieve efficient grinding of workpiece internal holes, external circles, end faces, conical surfaces, straight teeth, arc end teeth, non-circular contour surfaces, and other elements.



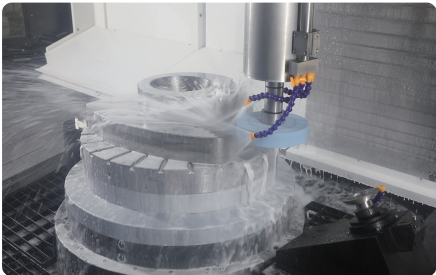
IT3~IT1 grade, surface roughness ≤Ra0.2



Internal bore grinding



Surface Grinding



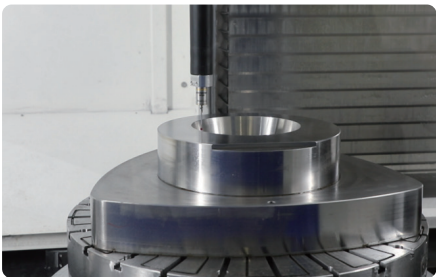
Alien-shaped surface grinding



Conical grinding



Automatic dressing grinding wheel



Automatic measurement

MULTI-PROCESS

Multiple processes are completed in one clamping;

MULTI-FUNCTION

Selection of various CNC axis linkage functions to complete complex profile machining;

HIGH RIGIDITY

Liquid hydrostatic technology ensures high rigidity and high load capacity;

HIGH CONVENIENCE

3D simulation human-computer interaction software, full-function CNC program package.

HIGH EFFICIENCY

Automatic transition between multi-head processes; Surface finishing and profile grinding;

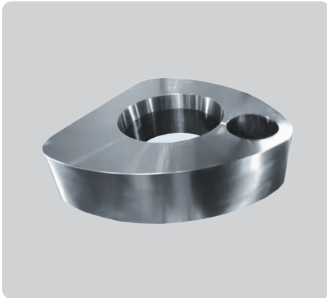
HIGH PRECISION

Hydrostatic technology and direct drive technology ensure extremely high machining accuracy and precision retention;

HIGH PERFORMANCE

Online dynamic balancing, AE system, online measurement, etc., provide perfect high-precision machining performance;

CASE DISPLAY



VG80 series	Typical parameters	VG80 series	Typical parameters
Worktable size	φ 800mm	Worktable run – out	Radial and axial run – out ≤ 0.001mm
Maximum grinding height	650mm	B – axis rotation angle	0–285°
Maximum worktable load	1500Kg	X – axis moving speed (continuous variable speed)	0.010–10m/min
Worktable rotation speed (stepless)	0.01–100pm	Z – axis moving speed (continuous variable speed)	0.010–8mmin
Maximum spindle speed and interface(Internal and external grinding head)	8000rpm, HSK100 – C (18000rpm optional accessory)	X – axis and Z – axis positioning accuracy and repeat positioning accuracy	± 0.003mm、± 0.002mm
Maximum spindle speed and interface(Surface grinding head)	4500rpm、N56	Spindle run – out	Radial and axial run – out ≤ 0.001mm

Specification series	Turntable Diameter (mm)	Maximum Swing Diameter (mm)	Maximum Workpiece Height (mm)	Maximum Workpiece Weight (kg)
2835Series	φ 350	φ 500	400	800
2860Series	φ 600	φ 750	500	1000
2880Series	φ 800	φ 1000	650	1500
28100Series	φ 1000	φ 1200	650	2000
28125Series	φ 1250	φ 1500	650	3000
28160Series	φ 1600	φ 1850	850	5000
28200Series	φ 2000	φ 2300	1050	5000

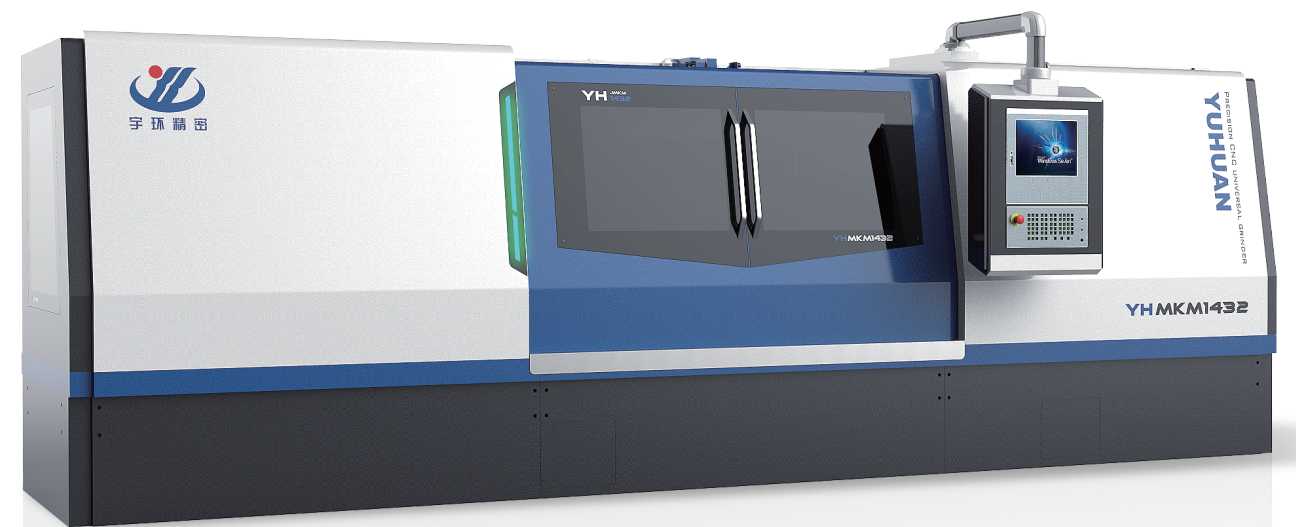
COMPANY PROFILE >>>

Hunan Yuhuan Precision Manufacturing Co., Ltd., a high-tech enterprise under Yuhuan CNC (Stock Code: 002903), specializes in the R&D, design, production, and sales of high-precision vertical compound grinding machines, vertical grinding centers, high-precision horizontal compound grinding machines, high-precision horizontal spindle rotary table grinders, industry-specific grinding machines, and key functional components for high-precision machine tools. The company provides customers with precise grinding solutions.

Its products are widely used in aerospace, rail transportation, machine tool manufacturing, automotive components, semiconductor industry, and other fields requiring high-precision grinding processes.



HIGH-PRECISION HORIZONTAL GRINDING SOLUTION HG SERIES



HUNAN YUHUAN PRECISION MANUFACTURING CO., LTD.

Company address: No. 4 Yingxia Road, Changsha Economic and Technological Development Zone Changsha City, Hunan Province, P.R.China

Service telephone: 0086-731-82877005

Company email: hnyhjm@hnyhjm.com

Company website: www.yh-cn.com, www.yhcnmachine.com



Video Number

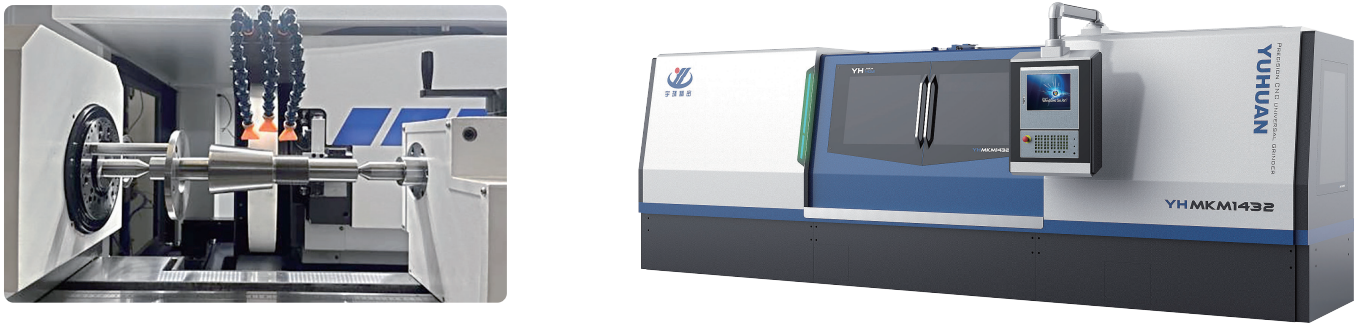


WeChat official account

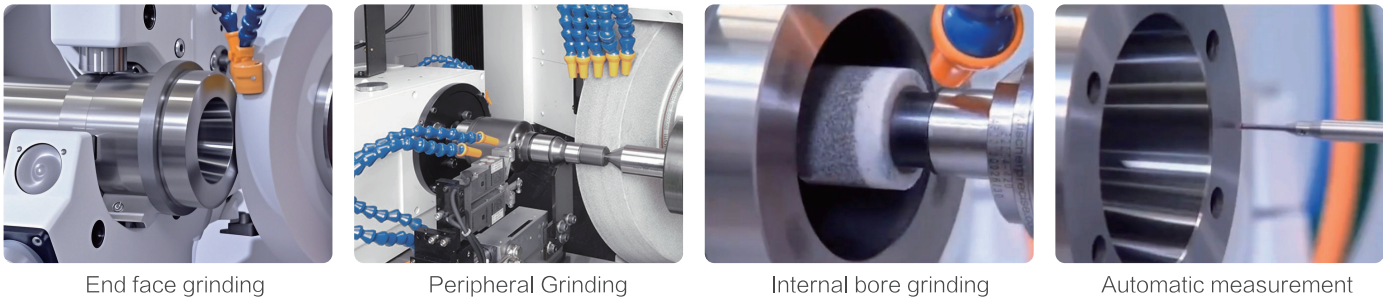
 **YUHUAN CNC MACHINE TOOL CO.,LTD.**

HIGH-PRECISION HORIZONTAL GRINDING SOLUTION (HG SERIES) >>>

Suitable for precision parts such as spindles, tool holders, cams, bearing seats, etc., used in mechanical equipment, rail transit, aerospace, and other fields, the efficient grinding of external cylindrical surfaces, internal holes, end faces, step surfaces, tapered surfaces, threads, screw rods, and non-circular contour surfaces.



IT3~IT1 grade, surface roughness ≤Ra0.2



MULTI-PROCESS

Multiple processes completed in one clamping;

HIGH EFFICIENCY

Automatic transition between multi-grinding head processes; Surface finishing and profile grinding;

MULTI-FUNCTION

Various CNC axis linkage function selections to complete complex profile machining;

HIGH PRECISION

Hydrostatic technology, direct drive technology, tailstock ±40 μm precision micro-adjustment collaboration, ensuring extremely high machining accuracy and precision retention;

HIGH STABILITY

Hydrostatic guideways, Class 00 marble base, reducing temperature effects and isolating vibration interference;

HIGH PERFORMANCE

Online dynamic balancing, AE system, online measurement, etc., providing perfect high-precision machining performance;

HIGH CONVENIENCE

3D simulation human-computer interaction software, full-function CNC program package.

CASE DISPLAY



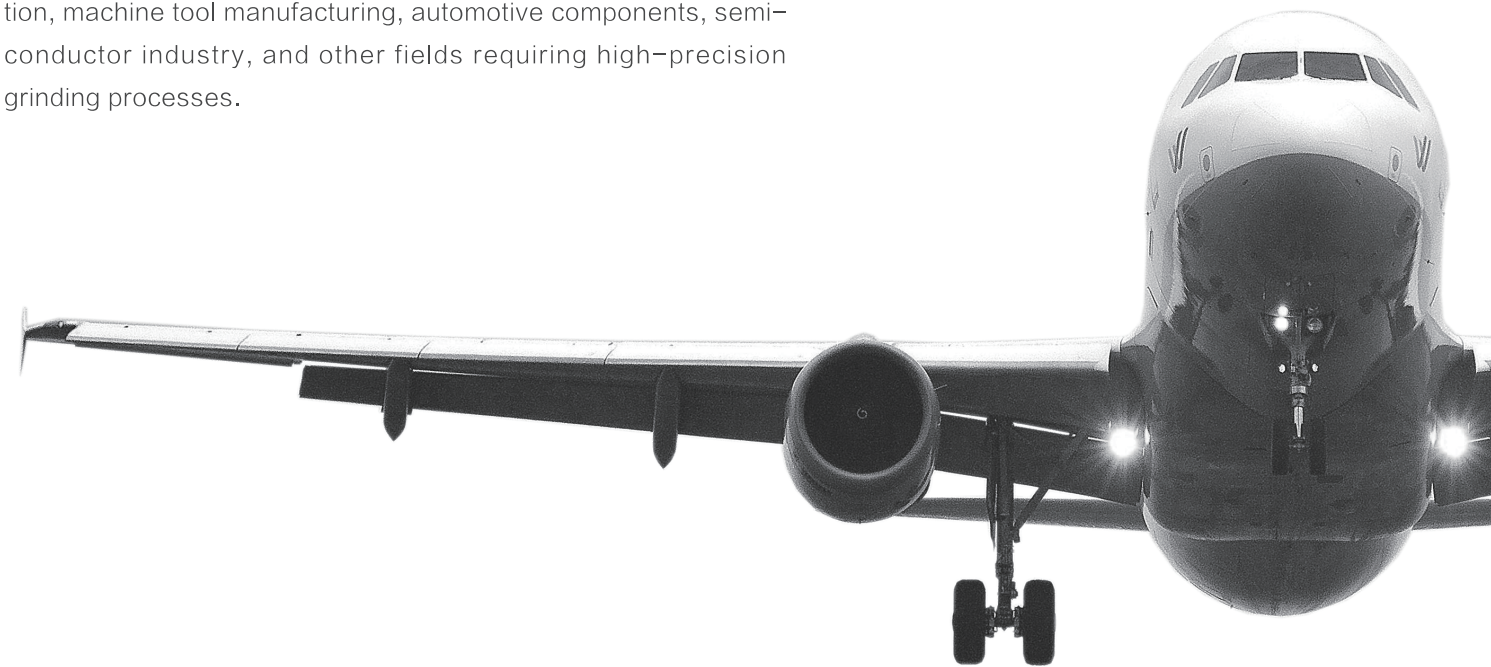
HG32Series	Typical parameters	HG32Series	Typical parameters
Top distance	1500	Central height	180mm
Maximum weight of the largest workpiece supported by the top-tier	300Kg	y-axis travel	380mm
Maximum moving speed of the X-axis	15m/min	Z-axis travel	1650mm
Maximum moving speed of the z-axis	15m/min	B-axis headstock rotation angle	-20° to+200°
Peripheral grinding motor power	38Kw	Rated speed	4300rpm
Maximum grinding wheel size	Φ500 × Φ203 × 60mm	Maximum grinding wheel peripheral speed of the outer circular grinder	120m/s
Internal circular grinding motor power	12Kw	Clamping taper	42000rpm
Headstock rotation speed	1—500rpm	Clamping taper	MT4
Tailstock sleeve diameter	Φ50mm	Rear micro-adjustment compensation	±40 μm
Machine tool size	Approx 6500 × 5200 × 2200mm (Length × Width × Height)	Machine tool weight	Approx15t

Machine tool model	1420Series	1432Series	1450Series	1463Series
Top distance (mm)	750	1000	1500	2000
Central height (mm)	135	175	270	350
Maximum grinding outer diameter (mm)	200	320	500	630
Maximum weight of the largest workpiece supported by the top-tier (Kg)	50	100	1000 (Add center rack)	2000 (Add center rack)
X-axis travelmm)	300	370	450	520
Y-axis travel (mm)	900	1150	1700	2200

COMPANY PROFILE >>>

Hunan Yuhuan Precision Manufacturing Co., Ltd., a high-tech enterprise under Yuhuan CNC (Stock Code: 002903), specializes in the R&D, design, production, and sales of high-precision vertical compound grinding machines, vertical grinding centers, high-precision horizontal compound grinding machines, high-precision horizontal spindle rotary table grinders, industry-specific grinding machines, and key functional components for high-precision machine tools. The company provides customers with precise grinding solutions.

Its products are widely used in aerospace, rail transportation, machine tool manufacturing, automotive components, semiconductor industry, and other fields requiring high-precision grinding processes.



HIGH-PRECISION SURFACE
GRINDING SOLUTION
TG SERIES



HUNAN YUHUAN PRECISION MANUFACTURING CO., LTD.

Company address: No. 4 Yingxia Road, Changsha Economic and Technological
Development Zone Changsha City,Hunan Province, P.R.China
Service telephone: 0086-731-82877005
Company email:hnyhjm@hnyhjm.com
Company website: www.yh-cn.com, www.yhcnmachine.com



Video Number

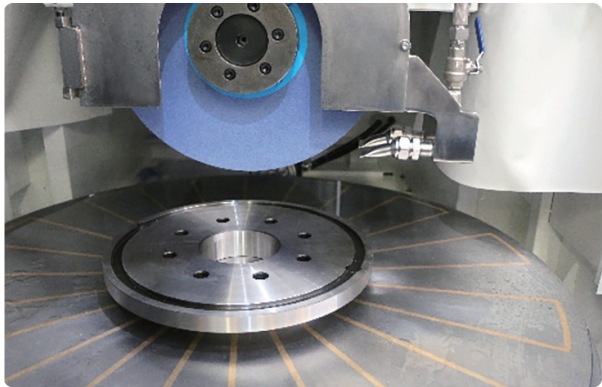


WeChat official account

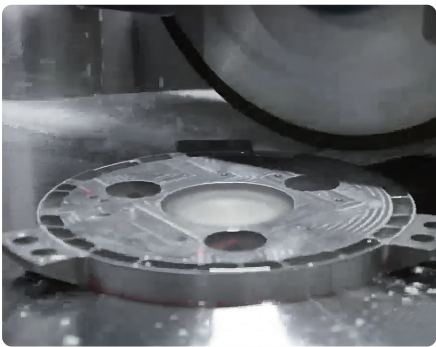
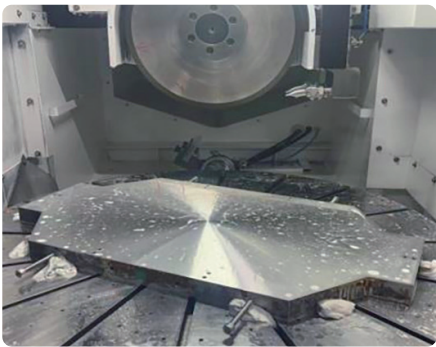


HIGH-PRECISION SURFACE GRINDING SOLUTION (TG SERIES)

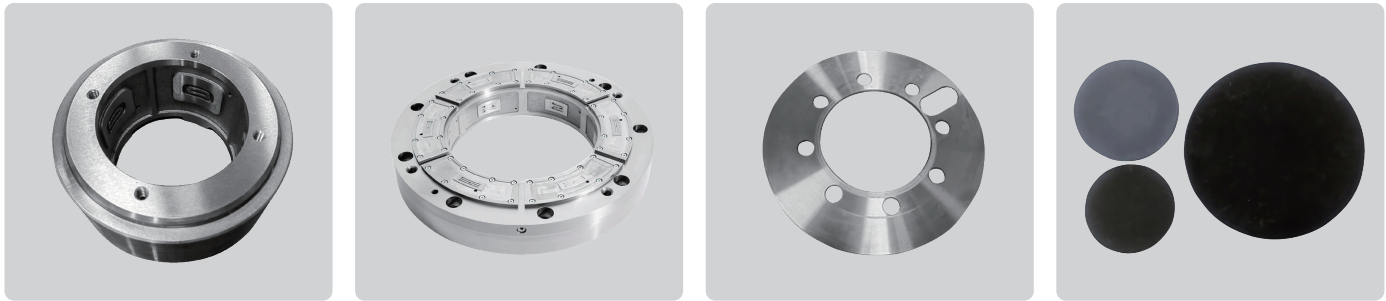
Widely applied in aerospace, machine tool manufacturing, automotive parts, semiconductor industry, and other fields, high-efficiency grinding of high-precision and high-surface quality planes and step surfaces.



IT3~IT1 grade, surface roughness ≤Ra0.2



CASE DISPLAY



TG73100	Parameter
Worktable Size	φ 1000mm
Maximum Grinding Height	350mm
Adjustable Worktable Tilt Angle	± 3°
Worktable Speed	0.1 – 80rpm (stepless)
Maximum Spindle Speed	4500rpm
Maximum Worktable Load (Closed Hydrostatic System)	1500Kg
Grinding Wheel Diameter	φ 350 – φ 450mm
Spindle Motor Power	38Kw
Machine Footprint (Length × Width × Height)	5200 × 4800 × 3600mm
Machine Weight	Approx. 20000kg (including auxiliary equipment)

HIGH PRECISION

Hydrostatic technology and direct drive technology ensure extremely high processing accuracy and precision retention;

COMPACT STRUCTURE, LOW VIBRATION

The grinding head spindle adopts an integrated electric spindle, and BALANCE online dynamic balancing can be configured (optional);

ADJUSTABLE WORKTABLE ANGLE

Adaptable to various forms of machining;

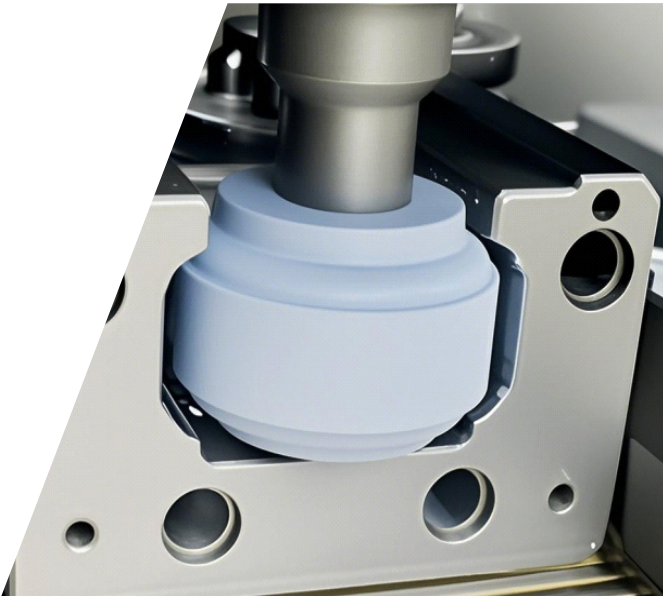
HIGH RIGIDITY

Marble bed base, precision level 00, wear-resistant, corrosion-resistant, low internal stress, good precision retention.

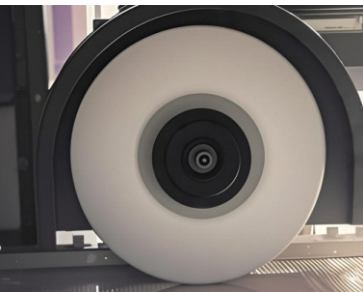
Model number	Turntable Diameter (mm)	Maximum Swing Diameter (mm)	Maximum Workpiece Height (mm)	Maximum Workpiece Weight (kg)
7340Series	φ 400	φ 500	300	400
7360Series	φ 600	φ 750	320	800
7380Series	φ 800	φ 950	350	1000
73100Series	φ 1000	φ 1150	350	1200
73120Series	φ 1200	φ 1400	400	2000

High-Precision Vertical Slide Block Grinding Machine

YHJMG72 Series



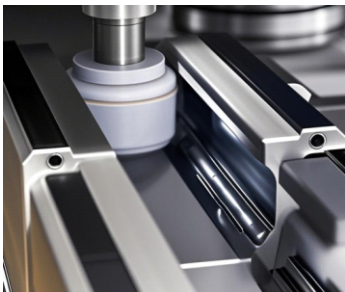
Accuracy: IT3~IT1 Grade
Surface Roughness: ≤ Ra0.2



Worktable Dressing



Spindle Wheel Dressing



Workpiece Grinding

Primarily applicable for shaping grinding and surface grinding processes of linear products.

Ultimate stability
Gantry fixed-beam structure + dual-axis layout + multi-module collaboration for high-speed, vibration-free machining

Peak Performance
Built-in electric spindle + intelligent cooling system for consistent output.

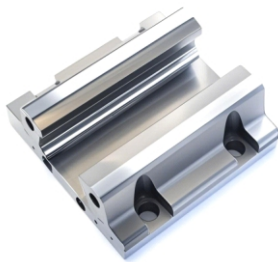
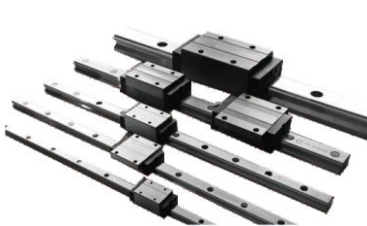
Zero Wear Precision
Adaptive hydrostatic guideway technology.

One-Touch Operation
CNC system with parametric software for zero programming.

Full Closed-Loop Control
Servo drive + hydrostatic guideway + optical scale feedback for dynamic error correction.

Patented Rigidity
Closed hydrostatic technology enhances structural strength.

Workpiece Materials:
Ferrous metals, non-ferrous metals, ceramics, non-metallic materials.



Parameter	Sub-Item	Unit	YHJMG7260	YHJMG7280
Worktable	Size	mm	600×600	1000×600
	Max. Load	Kg	600	500
Travel	X-Axis	mm	600	1000
	Y-Axis	mm	400	600
	Z-Axis	mm	300	300
Spindle	Speed	rpm	60,000	42,000
	Power	KW	6	10
Horizontal Sub-Spindle	Speed (Optional)	rpm	3,000	3,000
	Power	KW	1.25	1.25
Dressing Spindle	Speed	rpm	3,000	3,000
	Power	KW	3.2	3.2
Positioning Accuracy	X-Axis (No Grating)	mm	0.01	0.01
	Y/Z-Axis	mm	0.005	0.005
Repeat Positioning Accuracy	X-Axis	mm	0.008	0.008
	Y/Z-Axis	mm	0.002	0.002
X-Axis Straightness	Full Travel	μm	4	4
Feed Rate	Grinding	mm/min	5-10,000	5-10,000
	Rapid (X/Y/Z)	m/min	20/10/10	20/10/10
Power & Dimensions	Total Power	KW	22	29
	Weight	Kg	~3,800	~5,500
	Footprint	m	4×2	5×2.2

HUNAN YUHUAN PRECISION MANUFACTURING CO.,LTD.
Hunan Yuhuan Precision Manufacturing Co., Ltd.

☎ 0086-18774862105
🌐 www.yh-cn.com, www.yhcncmachine.com
✉ lyw@yh-cn.com
📍 No.4 Yingxia Road, Changsha Economic and Technological Development Zone
Changsha City, Hunan Province, P.R. China Service



Video Number

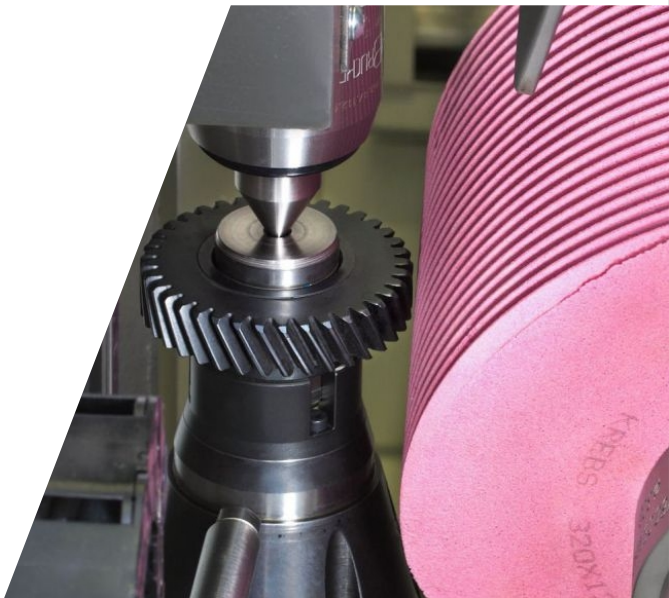


WeChat official account

本目录的内容2024年1月生效。设计和规格等如有变更，恕不另行通知。

CNC Vertical Worm Gear Grinding Wheel Machine

YHYMK7232



Grades: IT1 to IT3
Surface Roughness: ≤ Ra 0.2 μm

Widely used in automotive industry,mold manufacturing, rail transit, precision instruments, aerospace and other fields for high-precision gear grinding and complex profile modification.

- High-Precision Machining**
Generating/forming method grinding achieves tooth profile, helix angle, and pitch accuracy up to Grade 4 of national standards, with low surface roughness.
- Efficient Mass Production**
Continuous grinding processes shorten processing cycles, suitable for mass manufacturing of gears (disc gears/shaft gears).
- Intelligent Automation**
Fully automated process control (clamping/tool setting/grinding/dressing), multi-axis CNC programming, and reduced manual intervention.
- Self-Optimizing Grinding Wheel**
Automatic dressing compensation technology provides real-time wear correction, extends wheel lifespan, and ensures processing consistency.
- Rigid Structure**
High-stability machine bed design with low vibration and thermal deformation supports high-precision machining.
- Multi-Parameter Adaptability**
Adjustable module, helix angle, and material; flexible grinding wheel replacement expands processing scope.
- Core Technical Innovations**
Dual-spindle direct drive technology, automatic tooth slot alignment, stock distribution, and three-section profile modification optimize stability.
- Gear Grinding
- Worm Grinding Wheel Dressing

Model	Machining Diameter	Machining Module	Tooth Width	Worktable Load Capacity (kg)
YHYMK7216	Φ160	0.5-4	160	30
YHYMK7232	Φ320	0.5-5	260	80
YHYMK7250	Φ500	1-8	300	150

Suitable for precision machining of involute gears made from high-hardness metallic materials such as quenched steel and high-temperature alloy steel.



Specification	Unit	YHYMK7232
Workpiece		
- Module	mm	1-6
- Maximum Number of Teeth		320
- Maximum Addendum Circle Diameter	mm	320*
- Maximum Tooth Width	mm	260
- Helix Angle Range	Degree	±45°
Grinding Wheel Dimensions (Outer Diameter × Length)	mm	275×160
Spindle Parameters		
- Grinding Wheel Spindle		8000prm
- Workpiece Spindle		2000prm
Precision Index		
- Gear Machining Precision	Grade (GB/T 10095-2008)	Grade 4
Total Machine Power	Kw	35

HUNAN YUHUAN PRECISION MANUFACTURING CO.,LTD.
Hunan Yuhuan Precision Manufacturing Co., Ltd.

☎ 0086-18774862105
🌐 www.yh-cn.com,www.yhcncmachine.com
✉ lyw@yh-cn.com
📍 No.4 Yingxia Road,Changsha Economic and Technological Development Zone
Changsha City,Hunan Province,P.R.China Service



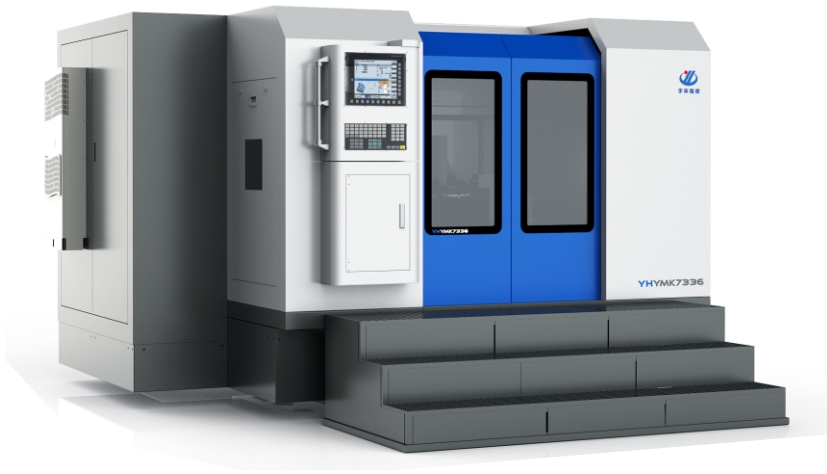
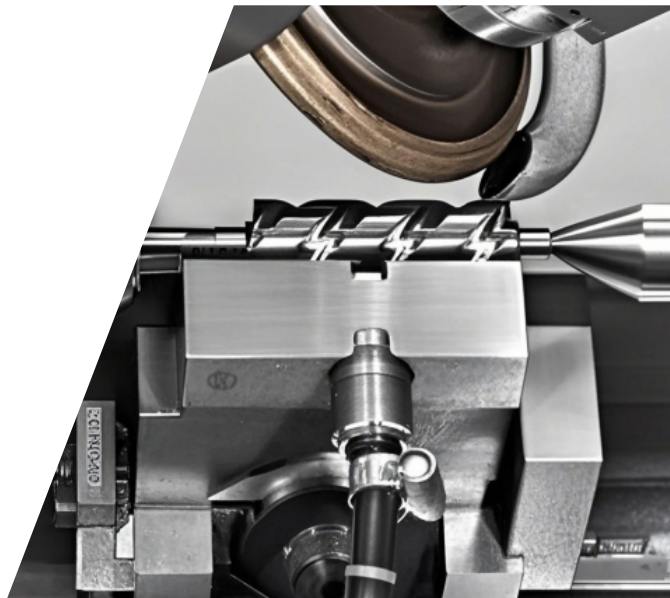
Video Number



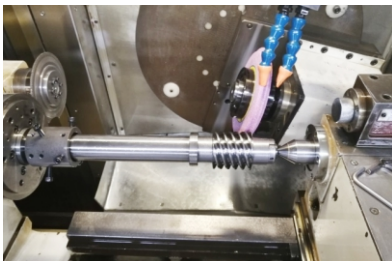
WeChat official account

CNC Horizontal Precision Form Gear Grinding Machine

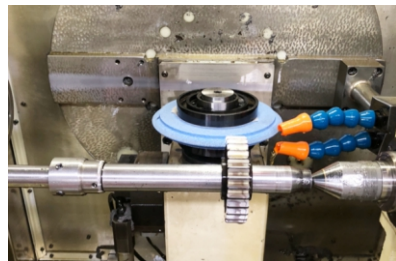
YHYMK7336



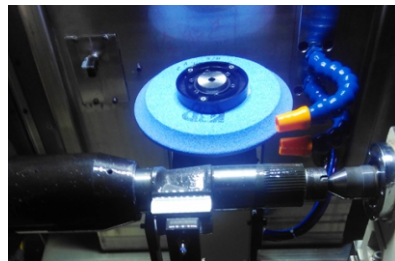
Accuracy: IT3~IT1 Grade
Surface Roughness: $\leq Ra0.2$



Straight Gear Grinding



Worm Grinding



Spline Grinding

Applications: High-precision gear grinding for automotive, aerospace, molds, and precision instruments.



Stable and Powerful System

The high-end CNC system boasts fast servo response, anti-interference capability, 9-axis simultaneous motion, and 6-axis closed-loop control for stability.



Simple Software Operation

With human-machine dialogue and menu-style input, it enables easy completion of parameter and process settings, satisfying diverse machining demands.



Extremely Efficient and Precise

Adopting the forming method, the grinding wheel is precisely dressed to match tooth grooves, automatically completing profile and direction modification. It ensures high-efficiency grinding with top-tier precision.



Intelligent Grinding Wheel Dressing

By inputting parameters, it automatically generates the profile, completes forming and dressing, and features a convenient memory function for the grinding wheel library.



Convenient Online Measurement

The professional measurement system accurately plots based on data, allowing intuitive control over machining quality.

Suitable for precision machining of involute cylindrical gears made from high-hardness metallic materials such as quenched steel and high-temperature alloys.



Item	Unit	Value
Workpiece	Module	1~12 mm
	Number of Teeth	1~200
	Addendum Circle Diameter	360 mm
	Maximum Tooth Width	600 mm
	Helix Angle Range	Arbitrary Degree
Grinding Wheel Installation Dimensions	Grinding Wheel Diameter	120-250 mm
	Grinding Wheel Height	20~40 mm
Workpiece Installation Dimensions	Headstock Center (Taper)	Morse 5# Morse Taper
	Tailstock Center (Taper)	Morse 5# Morse Taper
	Center Distance between Two Centers	900 mm
	Center Height	210 mm
Axis Parameters	X-axis (Grinding Wheel Left-Right Movement)	10000 mm/min
	Y-axis (Grinding Wheel Front-Back Movement)	6000 mm/min
	A-axis (Workpiece Rotation)	30 prn
	B-axis (Helix Angle Adjustment)	5 prn
	C-axis (Grinding Wheel Spindle)	8000 prn
	C1-axis (Dressing Spindle)	6000 prn
Precision Grade	Gear Machining Precision	Grade 5
Total Machine Power	Kw	40
Power Supply Parameters	-	380V \pm 10%, 50HZ, Three-Phase AC
Machine Noise	db (1m away from machine)	75

Model	Machining Diameter	Machining Module	Tooth Width	Worktable Load Capacity (kg)
YHYMK7320	$\Phi 200$	0.5-6	200	50
YHYMK7336	$\Phi 360$	1-12	600	120

HUNAN YUHUAN PRECISION MANUFACTURING CO.,LTD.
Hunan Yuhuan Precision Manufacturing Co., Ltd.

☎ 0086-18774862105

🌐 www.yh-cn.com, www.yhcncmachine.com

✉ lyw@yh-cn.com

📍 No.4 Yingxia Road, Changsha Economic and Technological Development Zone
Changsha City, Hunan Province, P.R.China Service



Video Number

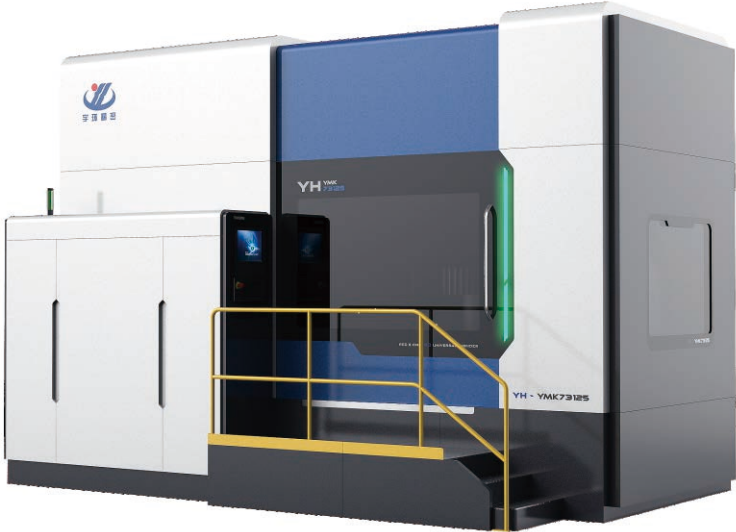


WeChat official account

本目录的内容2024年1月生效。设计和规格等如有变更，恕不另行通知。

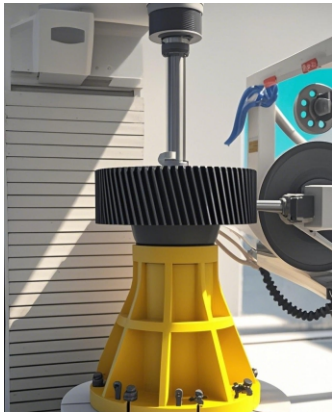
CNC Vertical Precision Form Gear Grinding Machine

YHYMK73125

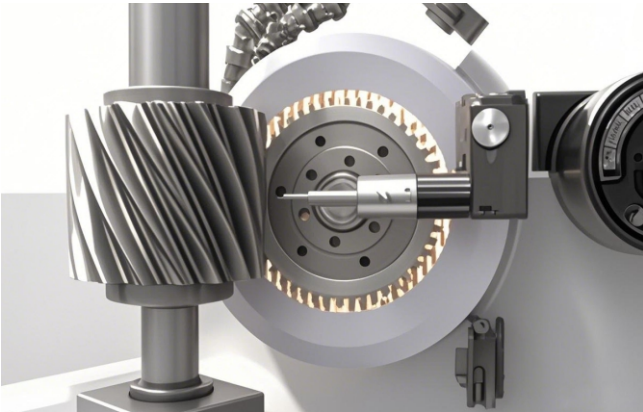


Accuracy: IT3~IT1 Grade
Surface Roughness: ≤ Ra0.2

Large-scale gear grinding for industrial and aerospace components.



Machining helical gears



Online inspection of helical gears

Item	Model	Machining Diameter	Machining Module	Tooth Width	Worktable Load Capacity (kg)
1	YHYMK7380	Φ800	Φ2-20	600	1500
2	YHYMK73125	Φ1250	Φ3-25	600	5000

Suitable for precision machining of involute cylindrical gears made from high-hardness metallic materials such as quenched steel and high-temperature alloys.



Item	Unit	Value
Workpiece		
- Module	mm	1.5-25
- Number of Teeth		≥8 teeth
- Addendum Circle Diameter	mm	250-1250
- Maximum Tooth Width	mm	600
- Helix Angle Range	Degree	±35°
- Maximum Workpiece Weight	Kg (including fixture)	5000
Grinding Wheel Spindle Installation Taper		
	mm	φ70
Grinding Wheel Installation Dimensions		
- Grinding Wheel Diameter	mm	400
- Grinding Wheel Bore Diameter	mm	160
- Grinding Wheel Thickness	mm	20-80
Workpiece Installation Dimensions		
- Worktable Diameter	mm	950
- T-slot Size	mm	18
Axis Parameters		
- X-axis (Grinding Wheel Front-Back Movement)	700mm	5000mm/min
- Y-axis (Grinding Wheel Axial Movement)	200mm	4000mm/min
- Z-axis (Grinding Wheel Vertical Movement)	700mm	6000mm/min
- A-axis (Grinding Wheel Swivel)	±35°	5prm
- C-axis (Workpiece Rotation)	360°	30prm
- W-axis (Dressing Wheel Vertical Movement)	125mm	4000mm/min
- Tailstock Z1-axis	550mm	2000mm/min
- S1-axis (Grinding Wheel Spindle)	Stepless Speed Regulation	1000-4000prm
- S2-axis (Dressing Spindle)	Stepless Speed Regulation	500-4000prm
Precision Index		
- Gear Machining Precision	Grade (GB/T 10095-2008)	Grade 5
Total Machine Power		
	Kw	60
Power Supply Parameters		
		380V±10%, 50HZ, Three-Phase AC
Machine Noise		
	db (1m away from machine)	75

HUNAN YUHUAN PRECISION MANUFACTURING CO.,LTD.
Hunan Yuhuan Precision Manufacturing Co., Ltd.

☎ 0086-18774862105
🌐 www.yh-cn.com, www.yhcncmachine.com
✉ lyw@yh-cn.com
📍 No.4 Yingxia Road, Changsha Economic and Technological Development Zone
Changsha City, Hunan Province, P.R.China Service



Video Number



WeChat official account

High precision CNC vertical double end grinder

Double-sided grinding process Progressive grinding method

Applicable to various special-shaped and round metal and non-metal thin parts, strong and efficient

high-precision grinding of the upper and lower parallel end faces

Four-corner support box adjustment structure

High rigidity and high-precision grinding head, ball double nut anti-backlash mechanism

Fixed-coupled feeding structure, cylindrical roller bearing + double thrust angular contact ball bearing layout

Dressing arm reciprocating motion, fixed type + outlet position dressing structure

Customized HMI human-machine interface



Typical application workpieces

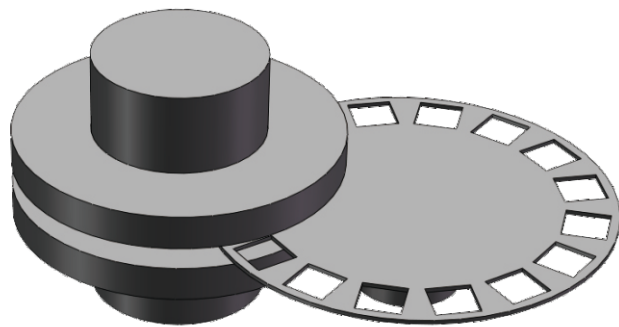




High precision CNC vertical double end grinder

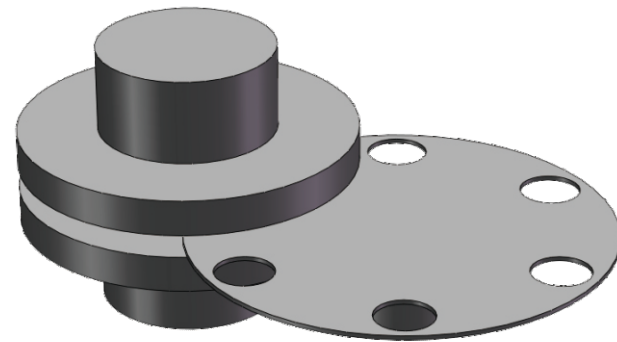
C-type grinding

Fixed angle between upper and lower grinding wheels, rotating workpiece feeding, quantitative grinding
Suitable for high-efficiency, multi-specification processing



Continuous grinding

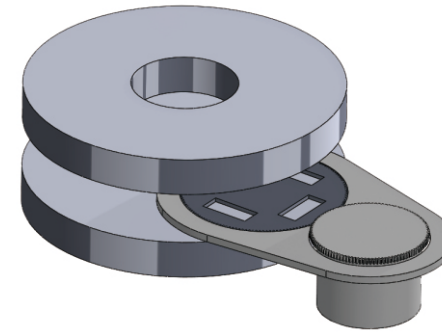
The upper and lower grinding wheels have a fixed angle, the workpiece disc rotates to clamp multiple workpieces, and the upper grinding wheel feeds the grinding process
Suitable for thin workpieces with large removal volume



Model	Processing method	Workpiece diameter (mm)	Workpiece thickness (mm)	Grinding wheel size
YHDM580B	C-type grinding Continuous grinding	φ12-φ120	0.8-40	φ585×φ195
YHDM580B/3	Oscillating grinding	φ20-φ320	8-40	φ585×φ195
YHDM580B/5	Planetary grinding	φ20-φ240	8-40	φ585×φ195
YHDM580E	C-type grinding Continuous grinding	φ12-φ150	0.8-40	φ585×φ180
YHDM580H	C-type grinding Planetary grinding	φ10-φ120	0.8-40	φ585×φ195
YHDM750A	C-type grinding Continuous grinding	φ12-φ180	0.8-40	φ750×φ195
YHDM750A/3	Oscillating grinding	φ50-φ400	8-40	φ750×φ195

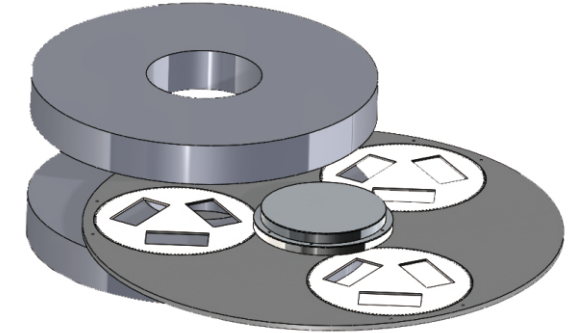
Swing grinding

Upper and lower grinding wheels are parallel, the workpiece disc swings to feed, and the upper grinding wheel feeds the grinding process
Suitable for high-thick workpieces with verticality requirements and large removal volume



Planetary grinding

Upper and lower grinding wheels are parallel, the workpiece disc rotates + swings to feed, and the upper grinding wheel feeds the grinding process
Suitable for high-thick workpieces with verticality requirements and large removal volume



Model	Processing method	Workpiece diameter (mm)	Workpiece thickness (mm)	Grinding wheel size
YHMM300B	C-type grinding Planetary grinding	φ10-φ80	8-40	φ305
YHMM7758/1	Planetary grinding	φ50-φ220	8-40	φ585
YHMM7765/1	Planetary grinding	φ50-φ260	8-40	φ650
YHMM7776/2	Planetary grinding	φ50-φ320	8-40	φ760
YHMG7758	C-type grinding	φ10-φ120	0.8-40	φ585×φ195
YHMG7776	Planetary grinding	φ100-φ500	15-60	φ760-φ800

Precision CNC Gantry Guide Grinding Machine

**Aims to solve the problem of import dependence
Realize import substitution of high-precision grinders**

Applicable to large-size planes and guide rail surfaces in the fields of machine tool manufacturing, industrial measuring tools, transportation, aviation and military industry, etc. High-precision grinding with large margins.

Hydrostatic technology ensures machining accuracy and precision retention.

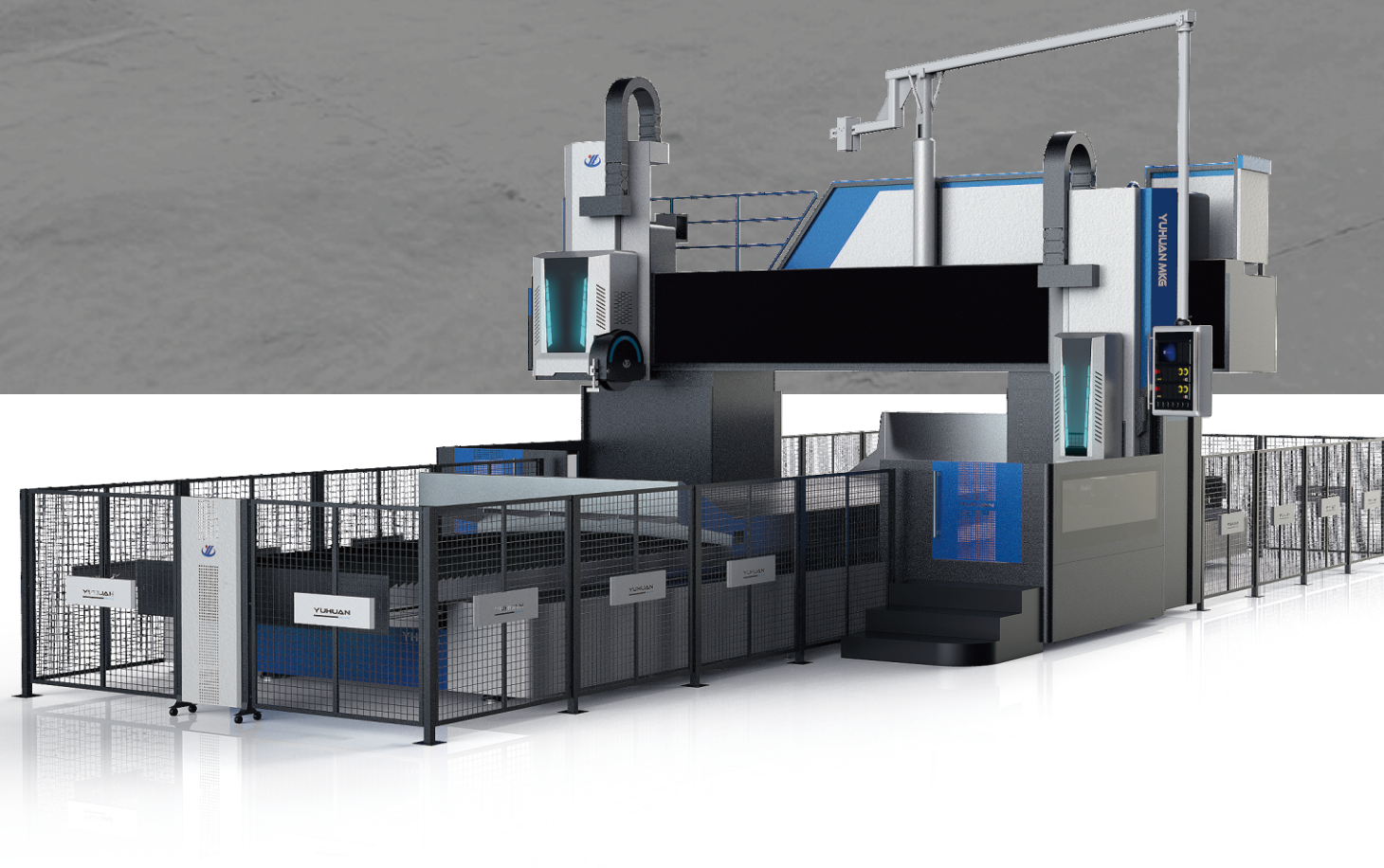
Gantry structure design, liquid hydrostatic technology.

Horizontal and vertical universal grinding heads, multi-factor one-time grinding parameterized.

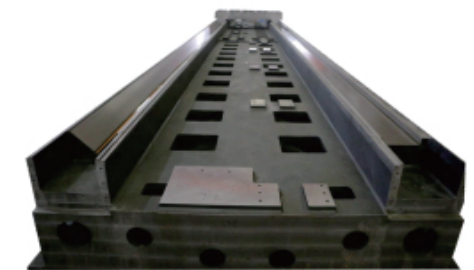
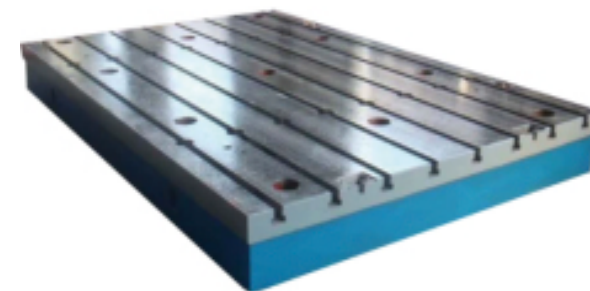
Human-computer interaction software, full-function CNC program package.

Online dynamic balancing, AE system provides perfect high-precision machining performance.

Non-constant flow and non-constant pressure hydrostatic technology.

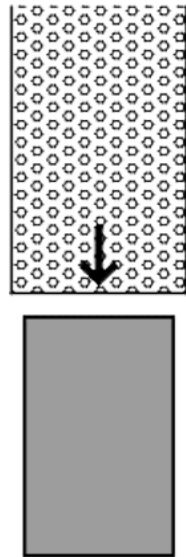


**Typical application
workpieces**

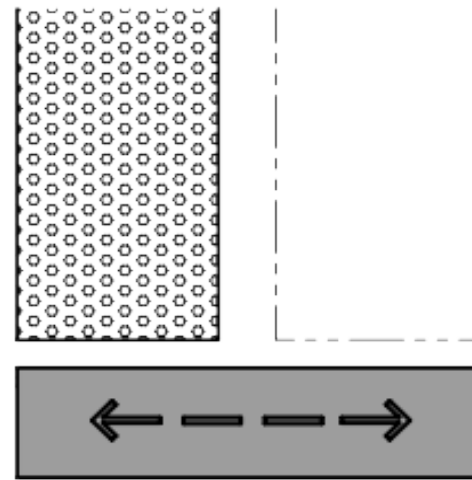


Precision CNC Gantry Guide Grinding Machine

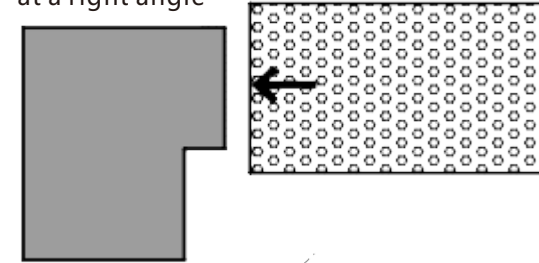
- Horizontal grinding head cuts into small planes



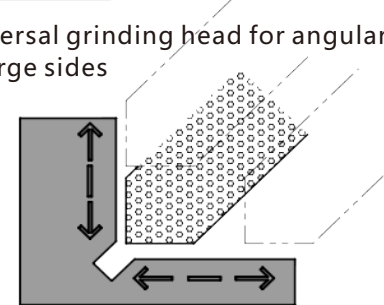
- Horizontal grinding head for horizontal grinding of large flat surfaces



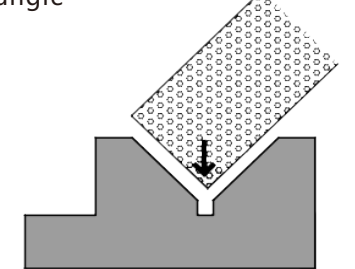
- Universal grinding head cuts into small side surfaces at a right angle



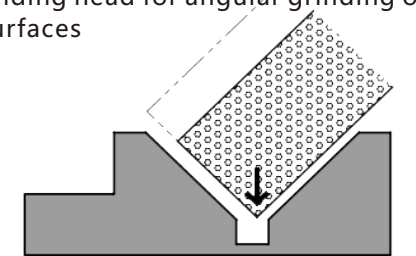
- Universal grinding head for angular grinding of large sides



- Universal grinding head cuts into narrow V-rail surfaces at an angle



- Universal grinding head for angular grinding of wide V-rail surfaces



Model	Work surface (mm)	Maximum load of work table (kg)
YHMK5316×25	1600×2500	4500
YHMK5320×30	2000×3000	10000
YHMK5320×40	2000×4000	12000
YHMK5325×60	2500×6000	17500
YHMK5330×80	3000×8000	20000
YHMK5340×80	4000×8000	35000
YHMK5340×100	4000×10000	40000
YHMK5350×100	5000×10000	50000

Gate width (mm)	Maximum pass width (mm)	Grinding range (mm)	Machine weight (kg)
2200	2000	1600×2500×1200	38000
2700	2500	2000×3000×1200	40000
2700	2500	2000×4000×1200	50000
3200	3000	2500×6000×1200	70000
3700	3500	3000×8000×1200	80000
4200	4000	4000×8000×1200	105000
4200	4000	4000×10000×1200	115000
5300	5000	5000×10000×1200	205000

Precision CNC Horizontal Spindle and Reciprocating Table Surface Grinder

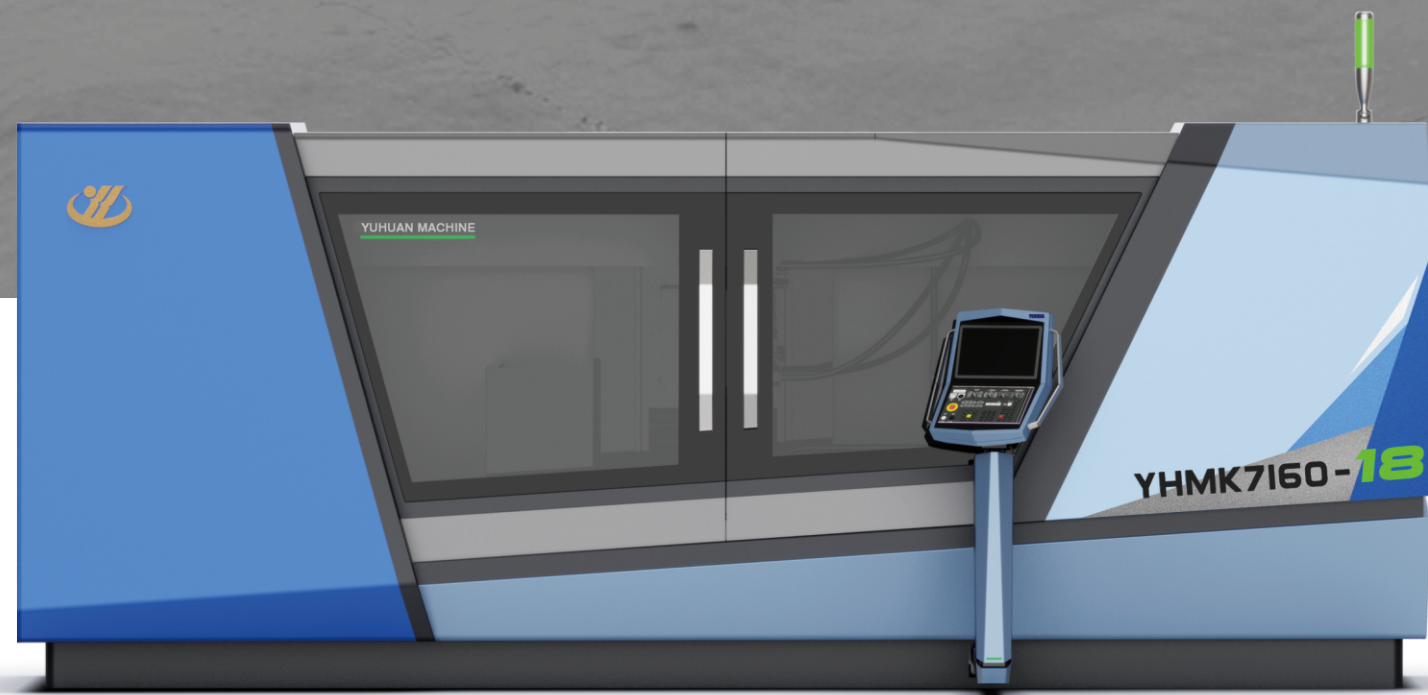
Grinding the workpiece surface with the periphery of the grinding wheel

Widely used in hydraulic parts, automotive parts, industrial molds, semiconductors, measuring tools, machine tool parts, aviation and military parts

Moving column structure design double V design sliding guide rail

Double group six slides and heavy roller linear guide rail

Self-developed CNC system and dedicated HMI grinding software



Typical application workpieces

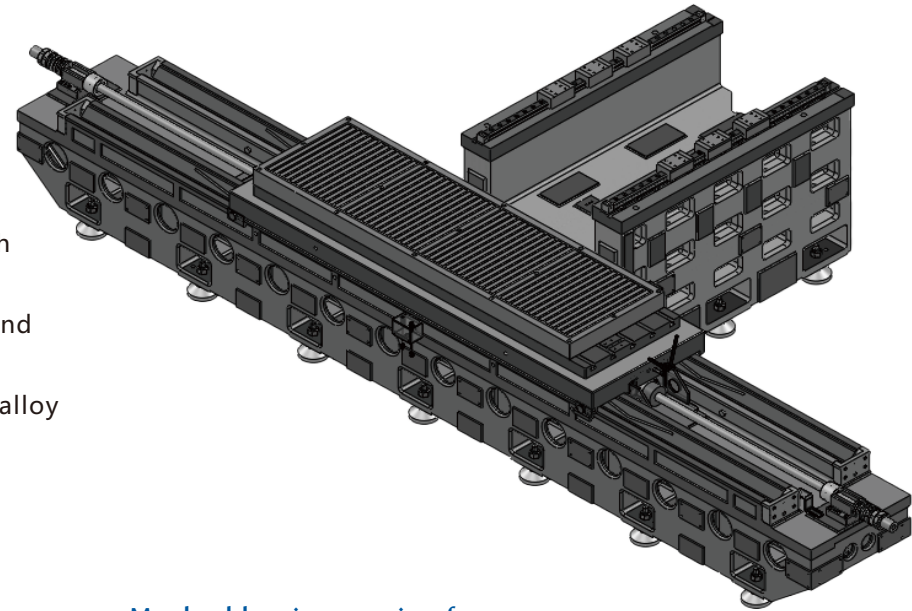




Precision CNC Horizontal Spindle and Reciprocating Table Surface Grinder

Bed parts

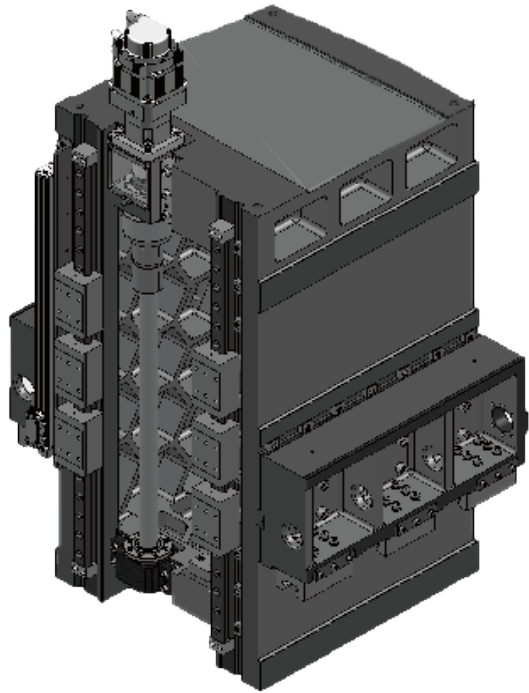
Three sets of sliders with ultra-high rigidity design
HT300 high-quality cast iron bed and worktable
Bed V rails with copper-chromium alloy
Quenched double V guide surface



Model	Workbench surface (mm)	Max load-bearing capacity of workbench (including magnetic table/kg)	Max processing height (including magnetic table/mm)
YHMK7120×5	200×500	150	400(*600)
YHMK7130×6	300×600	300	400(*600)
YHMK7140×8	400×800	400	400(*600)
YHMK7140×10	400×1000	500	400(*600)
YHMK7150×10	500×1000	500	400/500(*600)
YHMK7160×12	600×1200	1200	500(*700)
YHMK7170×15	700×1500	1500	600(*750)
YHMK7180×20	800×2000	2000	600(*750)

Dynamic column design

Mid-waist column design
Honeycomb double wall panel design
Precision heavy-duty roller linear guide
C3 grade precision ball screw



Max left-right movement (mm)	Max front-back movement (mm)	Machine weight (kg)
540	230	2500
700	330	4000
920	440	5000
1150	440	6000
1140	550	7000
1500	660	10000
1800	770	11000
2300	880	15000

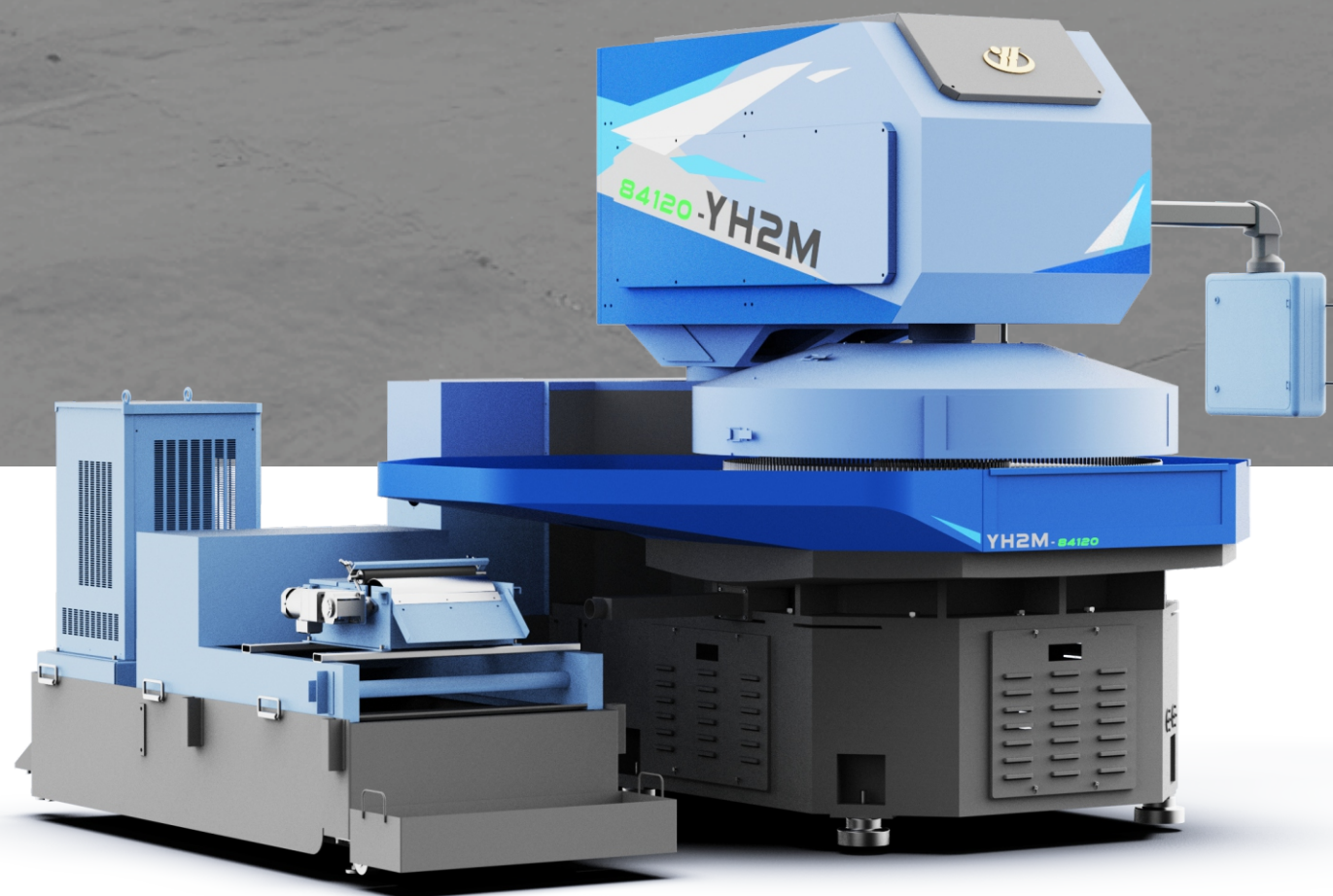
High-speed double-sided precision lapping machine

Four-way planetary gear motion principle

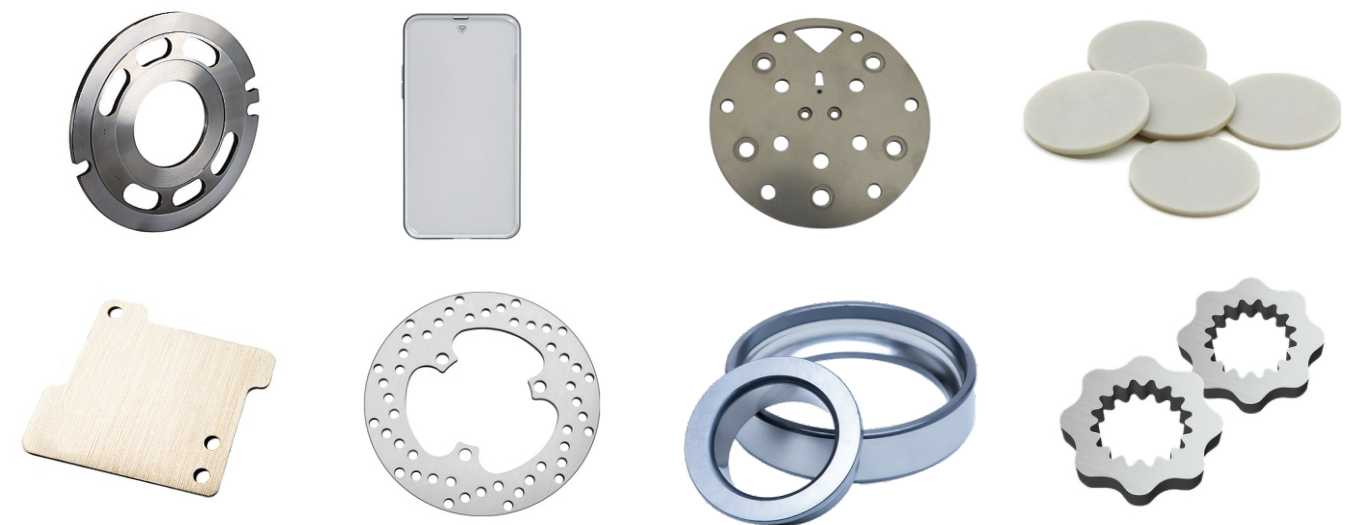
Applied to grinding and grinding the upper and lower parallel end faces of parts, using a variety of grinding wheels or grinding pads to perform efficient and precise double-sided grinding and thinning of metals and non-metallic hard and brittle materials such as steel, iron, copper, carbide, glass, and ceramics.

Direct connection with reducer.

High-precision thrust ball bearings and angular contact bearings support the drive spindle with built-in measuring sensors.



Typical application workpieces



High-speed double-sided precision lapping machine

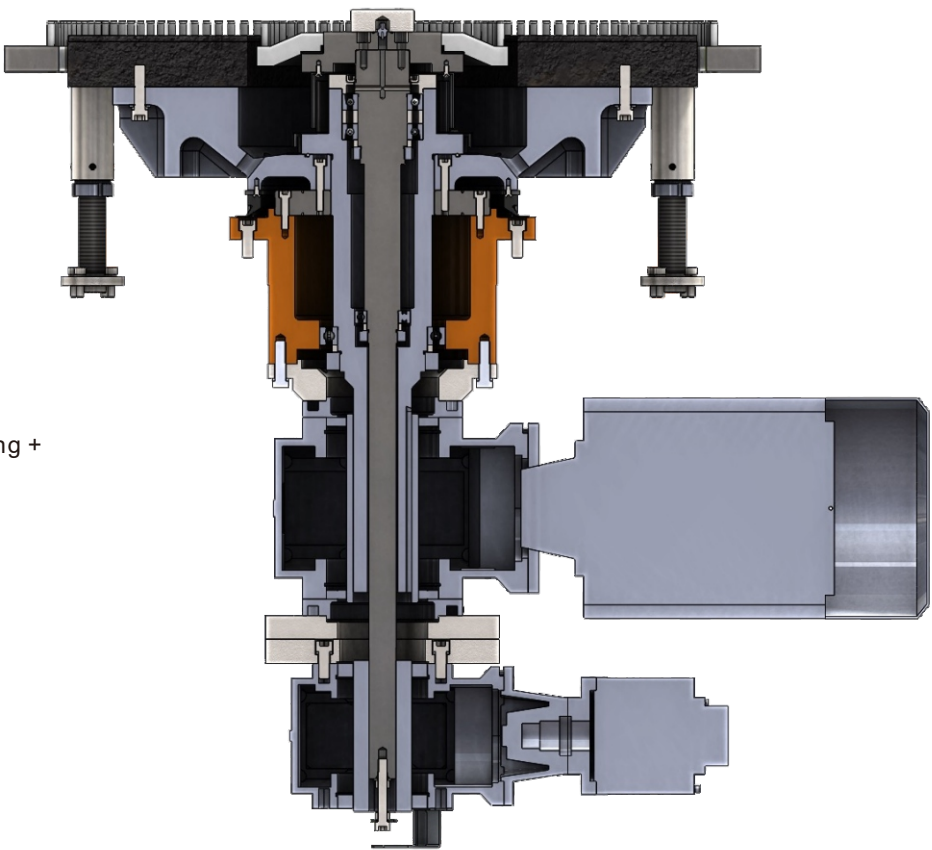
Upper plate structure

Cylinder pressurization and lifting upper plate ball gear structure
Cylinder + gear rack device realizes overall swing in and out



Lower plate transmission structure

Double-axis sleeve structure
Cross roller bearing + deep groove ball bearing support; Angular contact bearing + deep groove ball bearing support



Model	Processing size (mm)	Processing thickness (mm)
YH2M8470	Rectangular piece diagonal 200	0.4-40
YH2M84100	Rectangular piece diagonal 280	0.5-40
YH2M84120	Rectangular piece diagonal 400	0.5-40

Upper and lower grinding wheel size (mm)	Machine weight (kg)
$\phi 700 \times \phi 300 \times 55$ (基体50)	3800
$\phi 1000 \times \phi 450 \times 55$ (基体50)	6000
$\phi 1200 \times \phi 450 \times 55$ (基体50)	8200



R&D system with R&D center as core technology platform

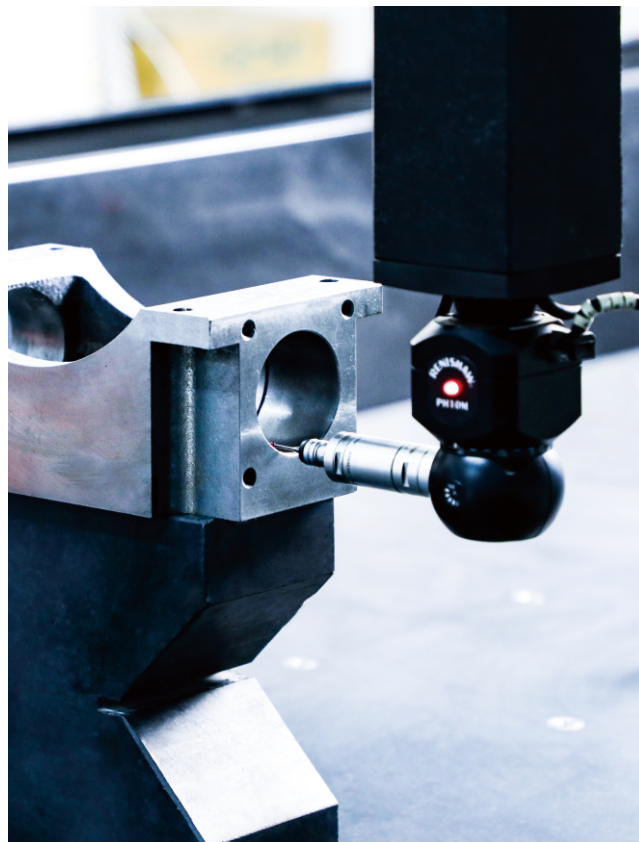


The company has three scientific research and innovation platforms: Hunan CNC Precision Grinding Machine Engineering Technology Research Center, Hunan Enterprise Technology Center, and Hunan Engineering Research Center for Efficient Precision Machining Equipment for Difficult-to-process Materials. It attaches great importance to "industry-university-research" cooperation, and has established good cooperative relations with domestic and foreign expert teams and universities and research institutes with leading advantages in the field of precision grinding technology, such as Hunan University, Dalian University of Technology, National Efficient Grinding Engineering Technology Research Center, and Hunan Key Laboratory of Ultraprecision Machining Technology. The company has undertaken national and provincial and ministerial scientific research projects and research topics for many times. Among them, "Precision Machining Equipment and Technology for Key Auto Parts" was included in the sub-topic of the National Science and Technology Support Plan, and the company's "Key Technologies and Industrialization Research on Precision Grinding and Polishing of Superhard Materials, Key Common Technologies for Efficient Precision Polishing of 3D Surfaces of Hard and Brittle Materials and Their Industrialization" were awarded Hunan Province's Strategic Emerging Industries Science and Technology Research and Major Scientific and Technological Achievements Transformation Project.



At present, the company has obtained a total of 234 patents, including 65 invention patents, 163 utility model patents, 6 appearance patents, and 89 computer software copyrights, and has formed a patent protection system for its core technologies and products.

Strict quality control and complete after-sales system



Quality goals

Technology catches up with the world's first-class
Innovative design, producing products with the
best cost-effectiveness

Regularly pass ISO9001:2008 international
certification review, quality management and
quality assurance system synchronized with the
international

After-sales guarantee

Factory products are high-quality and reliable, and early
failures are eliminated in the factory, ensuring that the
factory qualification rate reaches 100%

Respond to user problems within 24 hours and provide
solutions. If the problem cannot be solved, arrive at the
domestic site within 48 hours, and the after-sales staff
will not leave the site until the fault is eliminated

Factory products are free of charge during the warranty
period and provide permanent technical support.



Achieve cutting-edge manufacturing and revitalize national industry



Yuhuan CNC
Stock code 002903

Yuhuan CNC Machine Tool Co., Ltd. has been professionally engaged in the research and development, production, sales and service of CNC grinding equipment and intelligent equipment, providing customers with comprehensive solutions for precision grinding and intelligent manufacturing technology. It occupies a leading position in the field of precision CNC grinders and CNC grinding and polishing equipment in China.

The company's products are widely used in major areas of the national economy, including automotive industry, consumer electronics, internal combustion engines, bearings, precision manufacturing, ships, cutting tools, military industry, aerospace, etc. They are exported to more than 10 countries including South Korea, Japan, the United States, the Czech Republic, Russia, Thailand, Vietnam, India, etc., achieving import substitution.