

Precision Lapping & Polishing Machines



weChat Video



Tiktok



WhatsApp



YUHUAN CNC MACHINE TOOL CO., LTD

Add: No.9 Yongyang Road, Liuyang High-Tech Industrial Zone,
Changsha, Hunan Province, 410323. P.R.China
Mob: +86-18774862105
Tel/Fax: +86-731-83201588
Whatsapp: +91 9538933089
Email: lyw@yh-cn.com qzy@yh-cn.com

YUHUAN CNC MACHINE TOOL CO., LTD

Precision Grinding and Intelligent Manufacturing Technical Solution Professional Provider

YU HUAN

07. Others

CNC MACHINE TOOL

CONTENTS

01. Introduction	01
02. Double Surface Lapping Polishing Machine Series	04
03. Single Surface Lapping Polishing Machine Series	08
04. Curved Surface Polishing Machines	13
05. CNC Special Polishing Machines	18
06.5 Axis CNC Polishing Machine Series	21
07. Others	24

01 / Introduction

YUHUAN CNC MACHINE TOOL CO., LTD is a public National High-tech Enterprise (Stock No.: 002903) specialized in the R&D, manufacturing and sales of precision & high-efficient CNC machine tools.

Our company has been accredited as the Provincial Engineering Research Center of Precision CNC Machine Tools, the Provincial Enterprise Technology Center and Academician Workstation. Through years of self- innovation and development, YUHUAN has built up its own core technology competence, ensuring high-standard quality management with ISO 9001:2008 certification. Representing the high-end CNC machine tools, our product’s technology has pioneered domestically and reached the international advanced level.

The products we manufacture mainly include CNC Double Disc Surface Grinding Machine, CNC Lapping/ Polishing Machine and Intelligent Equipment, which are widely applied in the key areas of national economy, like automotive, IT electronics, military industry, aerospace, ship building, bearings, seals and home appliances. Today, we have spread our market footprints all over China and many other countries such as India, America, Brazil, Russia, Portugal, Vietnam and Korea.

In the principle of “Accomplishing Cutting-edge Manufacturing, Revitalizing National Industry” , YUHUAN is dedicated to becoming a global leader in the industry of CNC machine tools and intelligent equipment manufacturing.

Development History

2021

10 new products including YHMM300 precision CNC vertical Double Disc Grinding machine have passed international appraisal and acceptance, the overall technology has reached the domestic leading level or the international advanced level

2019

“Provincial Engineering Research Center of High Efficient & Precision Equipment 2019 for Difficult-to-machine Materials” co-founded with Hunan University Workshops of Yuhuan Intelligence accomplished for operation

2017

Listed as public company, stock No.: 002903
China first digital workshop of CNC precision grinding machine established

2012

Completed shareholding reform
Awarded as “2012 China Top 10 Innovative Machine Tool Company”

2007

The company is recognized as Hunan province “High-tech Enterprise” the company technology center is recognized as Hunan province “Provincial Enterprise Technology Center”

2004

Company expanded to Changsha, Capital city of Hunan
Doctor student research base founded

Main Products



CNC Grinders



CNC Polishing Machine



Robots



Precision Grinding and Polishing Materials



Functional Parts



Intelligent Equipment



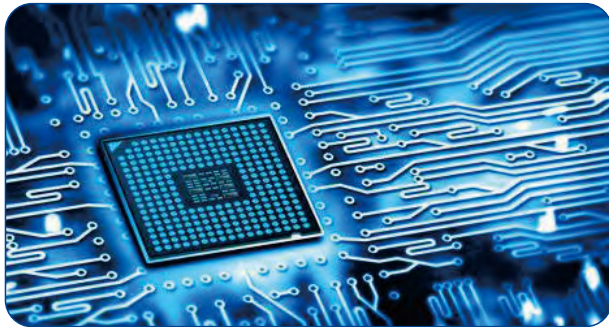
Metallurgical Energy Equipment

Application

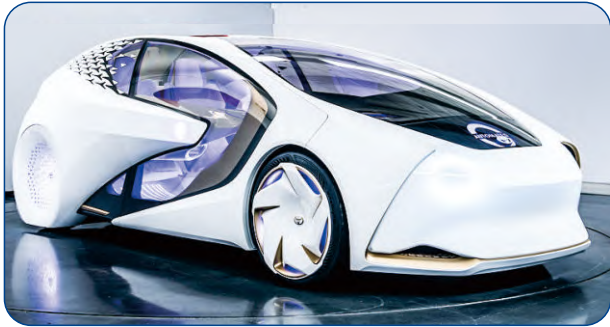
vision:
**World-leading High Precision
Grinding & Polishing Solution Provider**



Military and Aerospace



Semiconductor



Automotive Industry



3C consume electronics

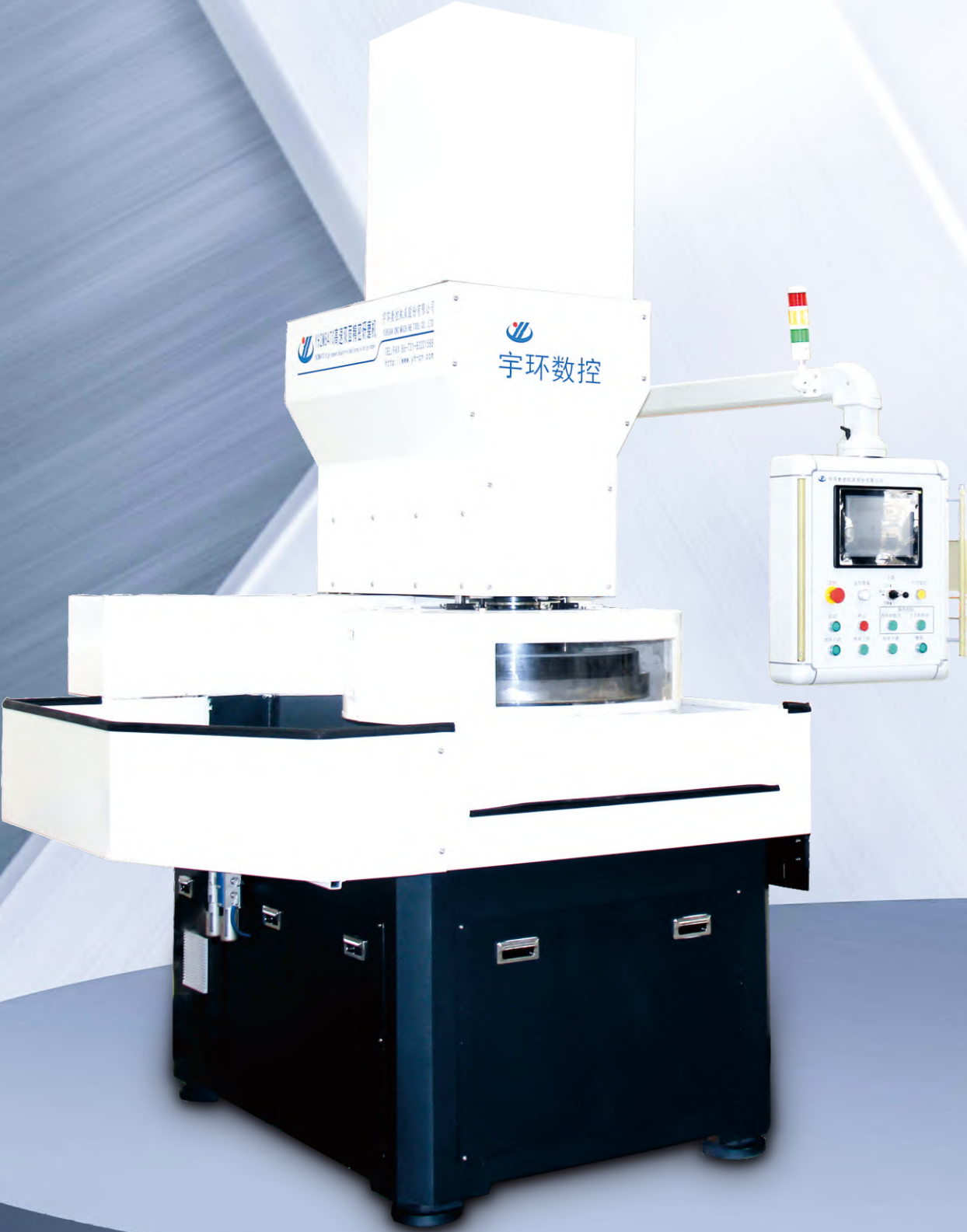


LED



Intelligent Home appliances

02/ Double Surface Lapping & Polishing Machine Series



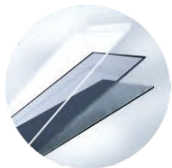
YHM77110

High-Precision Vertical Double Sided Lapping (Polishing) Machine

Used for double surface lapping and polishing of metal parts such as valve plates and friction plates, as well as thin parts made of non-metallic hard and brittle materials such as sapphire and ceramics.



Classical Processing Parts



Glass



Ceramic



Sapphire



Mobile phone box

Features

- 1. Adopts the gantry structure, with good stability and strong rigidity, the maximum polishing pressure is 1200kgf.
- 2. Double oil cylinder pressurization, pressure sensor feedback, and electro-hydraulic proportional valve to precisely control the pressure.
- 3. The four rotational speeds of the sun gear, the inner gear ring, the upper plate and the lower plate are independently set.
- 4. The upper and lower plates have built-in constant temperature design structure.

Technical Parameters

Items	Units	Parameter
Upper& Lower Lapping Disc Size (outer diameter x inner diameter x thickness)	mm	φ1070×φ495×45
Pin tooth planetary gear	mm	7个; number of teeth64, pitch 15.875
Minimum thickness of workpiece	mm	0.6
Maximum size of workpiece	mm	φ280 (diagonal length)
Workpiece accuracy	mm	Single piece flatness and parallelism within 0.006. Entire thickness and dimension accuracy within 0.008. (test workpiece size φ50)
Surface roughness of workpiece	μm	Lapping Ra0.15/Polishing Ra0.05
Lower disc speed	rpm	10-80 (stepness speed regulation)
Upper disc speed	rpm	8-50 (stepness speed regulation)
Lower Motor	kW	15kW/independent motor
Upper Motor	kW	11kW/independent motor
Dimensions (approximately: length x width x height)	mm	2500×2000×3000
Weight	kg	9000

YH2M700/1000/1200

High-Speed Double Surface Fine Grinding Machine

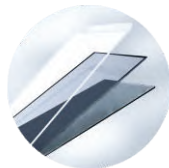
Mainly used for lapping and grinding the plane of parts, using CBN grinding wheel, diamond grinding wheel, diamond grinding pad to carry out high-efficiency and precision double-sided grinding of metal and non-metal hard and brittle materials such as steel, copper, cemented carbide, glass, ceramics, etc. thinning processing.



Classical Processing Parts



Compressor cylinder plate



Glass

Ceramic



Bearing



Cemented carbide

Features

- 1. 4 planetary annular polishing movements.
- 2. The sun gear, lower disc and upper disc are directly driven by the reducer, independent speed regulation.
- 3. The upper disc is pressurized by air cylinder + electric proportional valve; the swing arm mechanism realizes swing in/out, which is easy to operate.
- 4. Workpiece processing size is precisely controlled by measurement sensor, using the interactive HMI (touch screen), the processing parameters are setting down by the program.

Technical Parameters

Items	Units	YHM530	YHM700	YHM720	YHM1000	YHM1200
Diameter of Grinding Wheel	mm	ø530	ø700	ø700	ø1000	ø1200
No. of Carriers	nos	5	6	6	6	6
Workpiece Range (Max.)	mm	ø150	ø200	ø200	ø300	ø400
Thickness of Workpiece (Max.)	mm	30	40	40	100	100
Speed of Upper & Lower Wheel (Max.)	rpm	105	105	105	80	85
Speed of Inner Ring (Max.)	rpm	65	75	75	65	65
Spindle Power of Upper & Lower	kW	2 x 4	2 x 5.5	2 x 5.5	2 x9.2	2 x 11
Power of Inner Ring Servo Motor	kW	2	2	2	3	5
Max Pressure	kgf	600	700	700	1000	1500
Electrical Connection	-	415 Volt, 3 Phase, 50 Hz				
Weight	kg	3000	4500	4500	6000	6500
Overall Dimension (L x W x H)	mm	1500 x 1700 x 2500	1800 x 1900 x 2500	1800 x 1900 x 2500	2500 x 2100 x 2700	2600 x 3000 x 2300

13B-9L/8432C/8432E/ 8436B/18B/22B

High Precision Vertical Double Surface Lapping (Polishing) Machine Series

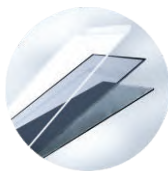
Applied in the parallel surface of lapping and polishing of metallic and non-metallic brittle hard thin materials in silicon wafer, sapphire crystal, ceramic wafer, optical glass, quartz crystal, cellphone glass, semiconductor.



Classical Processing Parts



Cemented carbide



Glass



Ceramic



Sapphire



Bearing



Cemented carbide

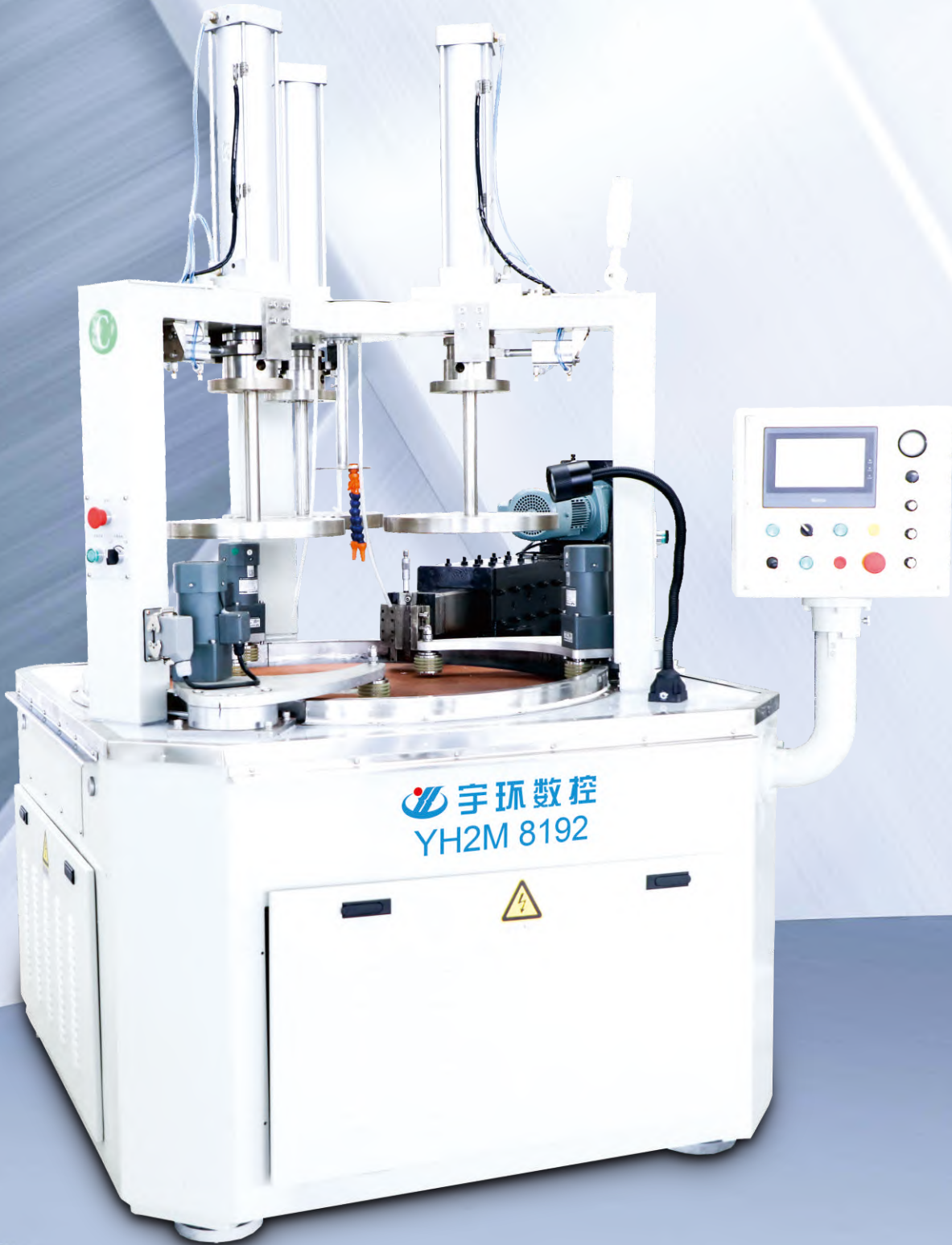
Features

- 1. 4 planetary annual polishing movements;
- 2. Adopting lifting method of inner gear cam mechanism and equipping safety self-lock cylinder device.
- 3. Sun wheel, upper disc, lower disc, ring gear are driven by gear pair + reducer transmission, variable frequency speed regulation.
- 4. Loading pressure is controlled by cylinder + electrical proportion valve, adopted touch screen + PLC HMI.

Technical Parameters

ITEMS	Units	YH2M13B-9L	YH2M8432C	YH2M8432E	YH2M8436B	YH2M18B	YH2M22B	
Lapping disc size (Outer Diameter x inner Diameter x Thickness)	mm	φ978x φ558x45	φ1070x φ495x45	φ1070x φ495x45	φ1140x φ375x45	φ1280x φ449x50	φ1462x φ494x50	
Planetary wheel specification		DP=12 Z=108	P=15.875 Z=64	P=16.842 Z=60	P=15.875 Z=84	P=21.053 Z=71	M=3 Z=184	
Planetary wheel amounts	n	3≤n≤9	3≤n≤7	3≤n≤7	3≤n≤5	3≤n≤5	3≤n≤5	
Workpiece Maximum Size	mm	φ180 (Diagonal)	φ280 (Diagonal)	φ280 (Diagonal)	φ360 (Diagonal)	φ440 (Diagonal)	φ480 (Diagonal)	
Workpiece minimum thickness	mm	0.4			0.5	0.6	0.3	
Lapping Flatness	mm	0.006(φ100)						
Polishing Flatness	mm	0.008(φ100)						
Lapping Roughness	μm	Ra0.15						
Polishing Roughness	μm		Ra0.05					0.04
Size (Aproximately: LxWxH)	mm	1650x1300 x2650	1750x1450 x2700	1750x1400 x2700	1800x1450 x2650	2250x1750 x2700	3800x3300 x3600	
Weight (Aproximately)	kg	2600	3500	3200	3200	5000	11000	

03/ Single Surface Lapping & Polishing Machine Series



YH2M8192/8192 II / 8195/8164

Single Surface Lapping (Polishing) Machine

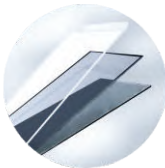
Used for single-side Lapping and Polishing thinning parts of metallic parts of valve plate and non-metallic materials of glasses, ceramics, sapphire etc.



Classical Processing Parts



Gasket



Glass

Ceramics



Metal logo



Copper

Features

- 1. 3 /4 station eccentrical Planetary single surface Lapping machine.
- 2. Precisely adding pressure by air cylinder + electrical proportion valve, HMI.
- 3. Polishing wheel driven directly by frequency speed regulation reducer, working ring driven by rolling
- 4. wheel + speed regulation motor.

Technical Parameters

ITEMS	Units	YH2M8192	YH2M8192 II	YH2M8195	YH2M8164	YH2M8164B (With dressing mechanism)
Lapping disc size (Outer Diameter x inner Diameter x Thickness)	mm	φ914×35	φ914×35	φ952×35	φ640×30	φ640×30
Work ring size(Outer Diameter x inner Diameter x Height)	mm	φ410×φ368 x60(3piece)	φ410×φ368 x60(3piece)	φ400×φ375 x60(3piece)	φ268×φ238 x50(3piece)	φ268×φ238 x50(3piece)
Planetary wheel amounts	mm	3≤n≤9	3≤n≤7	3≤n≤7	3≤n≤5	3≤n≤5
Workpiece Maximum Size	mm	φ300	φ300	φ320	φ220	φ220(Diagonal)
Workpiece maximum flatness accuracy	μm			0.005 (φ80) /0.008(φ80)	0.003 (φ80) /0.005(φ80)	
Workpiece roughnes	μm			Ra0.15 /Ra0.05	Ra0.15 /Ra0.125	
Rotation speed	rpm	5 ~ 90(Ininitely variable speed)	5 ~ 90(Ininitely variable speed)	5 ~ 90(Ininitely variable speed)	5 ~ 90(Ininitely variable speed)	5 ~ 90(Ininitely variable speed)
Motor	kw/ rpm	Power:7.5 Rated Speed:1450	Power:7.5 Rated Speed:1450	Power:11 Rated Speed:1450	Power:7.5 Rated Speed:1440	Power:5.5 Rated Speed:1400
Cylinder(diameter X Stroke)	No.	φ100×400 (3 pieces, weights pressurized)	φ100×400 (3 pieces, weights pressurized)	φ100×400 (4 pieces, weights pressurized)	φ100×400 (3 pieces, weights pressurized)	φ100×400 (3 pieces, weights pressurized)
Stations	No.	3	3	4	3	3
Size	mm	1570×1725×2250	1600×1625×2150	1500×2200×2250	1225×1900×2350	1550×1700×2250
Weight (Aproximately)	kg	2000	2500	2800	2100	1900

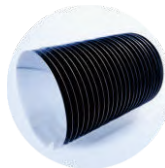
YH2M8180

Vertical Single Surface Polishing Machine

Mainly used for single-side polishing of thin parts of ceramics, sapphire materials processing.



Classical Processing Parts



Wafer



Sapphire

Features

- 1.Adopting eccentrical Planetary moving;
- 2.Workpiece, polishing disc driven by reducer directly with frequency VFD speed regulation.
- 3.Adopting air cylinder + electrical proportion valve control the press precisely, with HMI and PLC

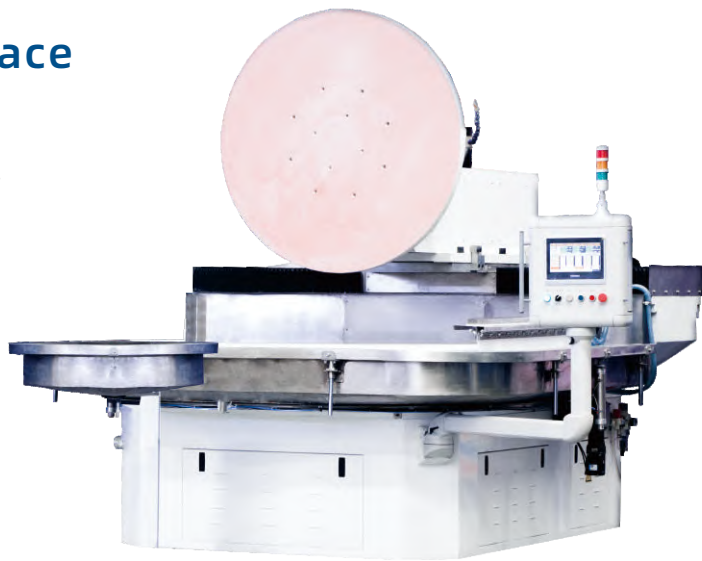
Technical Parameters

ITEMS	Unit	Parameters
Upper disc size (outer diameter×thickness)	mm	φ305×20
Lower disc size (Outer Diameter xinner diameter xthickness)	mm	φ840×φ600×50
2 correction wheel size	mm	Thickness δ=20(diamond correction wheel 26)
Minimum thickness	mm	0.3
Maximum Size	mm	6 sapphire
Lower Disc rotation speed	rpm	0-80 infinitely variable speed
Motor	/	Y160M-4; 11kW, Rotation :125-1250rpm infinitely variable speed
Size(L*W*H approximately)	mm	1800×1390×2800
Weight	kg	5000

YH2M81190

High Precision Single Surface Polishing Machine

Mainly used for fine grinding and polishing of large-size plane in the optical, electronics, mechanism, such as rubber plate prisms, optical flat crystal, liquid crystal display sheet, IC shading film, crystal, filter glass, sapphire glass, quartz crystal, silicon wafer, ceramics and other components, as well as STN-LCD,CSTN-LCD, sheet glass substrate and other hard and brittle materials of high precision, high efficiency single-sided polishing.



Classical Processing Parts



LED



Large size glass

Features

- 1.Upper disc diameter:1300mm,Lower disc diameter:1900mm,the upper disc could flip 90°, Lower disc provides power by variable frequency motor to drive the reducer, the upper disc is driven by the lower disc to rotate, both of upper and lower disc can be used as mounting workpieces or as polishing discs, and the workpiece size can be processed ≤1850.
- 2.The upper disc can be traversed horizontally to form a reciprocating motion to ensure the flatness and smoothness of workpiece processing, and upper disc moving stroke is 1100mm.
- 3. The process parameters can be preset by using PLC and touch screen, the lower disc motor is driven by variable frequency motor to realize stepless frequency conversion speed regulation.

Technical Parameters

ITEMS	Unit	Parameters
Lower disc (customize)	mm	φ1900, flatness tolerance±0.01
Lower disc rotation speed	rpm	0~50
Upper disc size(customize)	mm	φ1300, flateness tolerance±0.01
Upper disc swing amplitude	mm	≤700
Upper disc workpiece maximum size	mm	①Round(square diagonal)workpiece ≤1850(adsorbed to lower disc); ②Round(square diagonal)workpiece 1345×1345(adsorbed to upper disc) ;
Polishing fluid tank volume (customize)	L	40
Mixing motor	W	400
Polishing fluid pump	W	375W
Lower disc motor	/	22kW 1450rpm 3相380V
Upper disc motor	/	2.2kW 1450rpm 2相220V
Swing servo motor	/	3.0kW 2000rpm 3相380V
Installed capacity	KVA	Approximately 25
Size(L×W×H)	mm	Approximately4000×3000×2400
Weight	kg	Approximately10,000

YH2M8155

Four spindles precision Single-Side Lapping (Polishing)Machine

Mainly used for single-side lapping and polishing of metallic parts of valve plate, valve wafer, friction plate, rigid seal ring, cylinder piston ring, oil pump van etc. as well as non-metallic materials such as silicon wafer, crystal, quartz crystal, glass, ceramics, sapphire.



Classical Processing Parts



Silicon



Sapphire

Features

- 1.Eccentric planetary movements.
- 2.Workpiece disc, polishing disc driven by reducer and variable frequency drive directly;
- 3.Using cylinder + electrical proportion valve to control the pressure with touch screen and PLC.

Technical Parameters

ITEMS	Unit	Parameters
Lower disc size	mm	φ1422×145
Lapping wheel size	mm	φ550 / SUS304 flatness≤5um
Weight	T	9
Size (L*W*H)	mm	2255×1875×3300
Temprature testing system		Available
Polishing fluid supply system		Available
PP Cooling system		Available
Lower disc cooling system		Available
Upper disc Driven system	4sets	Available
Tuning tool servo system		Optional
Full process control system		Available/up to 10 steps process can be written (50 recipe)
History Data saving&reding system (Temp,rotation speed,Time,Pressure)		Available
Water guns and air guns		Available
Upper disc pressure and accuracy		Single disc maximum pressure 500kg/ea, minimum pressure 40kg/ea, pressure tolerance and errors <3%
Supply power		Voltage: 380V±10%/220V±10%, Frequency: 50Hz±2%
Power	kW	≤30
Air press request	Mpa	End press: 0.5 ~ 0.7
Cooling water request		Pressure: 2-4kg/cm2, Flow: 10-16L/min., Temp: 8-18°C
Enviroment request		Environment temp: 0°C-45°C

04 / Curved Surface Polishing Machine



YH2M81116A/81118 3D Curved Surface Polishing Machine

Mainly used for auto lapping and polishing of plane and 2.5D/3D curved surface of metallic-materials, such as Aluminum alloy, stainless steel, as well as non-metallic materials like glasses, ceramics.



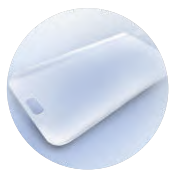
Classical Processing Parts



Three-dimensional logo



2.5D mobile phone glass



3D mobile phone glass

Features

- 1. Multi-station lower disc adsorbing polishing machine with vacuum gas-liquid separation device.
- 2. YH2M81116 with 5 workpiece plate stop L/UL; YH2M81118 designed 8 workpiece plates when 4 is polishing and other 4 is loading and unloading at the same time without stopping machine.
- 3. Polishing disc adding pressure by servo motor driven by ball screw.
- 4. Touch screen + PLC control.

Technical Parameters

Items	Unit	YH2M81116A	YH2M81118
Workpiece size (Outer D × Thickness)	mm	φ400×25 (Aluminium Alloy)	φ400×25 (Aluminium Alloy)
Workpiece plates	No.	5	8
Maximum workpiece size	mm	360	360
Polishing disc size (Outer D)	mm	φ1135	φ1135
Workpiece rotation speed	rpm	2 ~ 45 (stepless speed regulation)	2 ~ 45 (stepless speed regulation)
Workpiece orbital speed	rpm	1 ~ 12 (stepless speed regulation)	Auto change, without revolution
Polishing disc rotation speed	rpm	2 ~ 90 (stepless speed regulation)	2 ~ 90 (stepless speed regulation)
Polishing disc lifting strokes	mm	350	350
Size (L × W × H) Approximately	mm	1900×1500×2800	2430×1935×2575
Auto loading and Unloading		No	Yes
Weight	kg	2800	4050

YH2M81120

CNC High-Precision Double-Station Polishing Machine

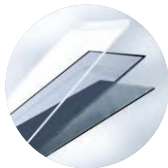
Used for 2.5D/3D cellphone glass polishing.



Classical Processing Parts



Metal logo



Glass



2.5D mobile phone glass

Features

- 1.A,B work station with 4 workpiece plate separate, realizing polishing, loading and unloading workstation changeover by lifting and flipping.
- 2.Adopted position pressurization mode, controlled upper disc loading position by motor current feedback.
- 3.Polishing disc adopts variable frequency speed regulation and vacuum gas-liquid separation device.
- 4.Touch screen and PLC control.

Technical Parameters

Items	Unit	Parameters	Notes
Upper Workpiece plate size	mm	φ500	
Lower polishing disc size	mm	φ1200	
Lower polishing disc rotation speed	r/min	1 ~ 90	
Upper workpiece plate lift stroke	mm	400	
Upper workpiece plate speed	r/min	Stepless speed regulation	
Workpiece rotation speed	r/min	25	
Upper disc amount	No.	8	4pieces in 1 group, 2 workstation with A / Bo surface
Size (L×W×H)	mm	2240×1650×2000	
Weight	kg	Approximately 2000	

YH2M8690

Auto Positioning Curved Surface Polishing Machine

Suitable for polishing 2.5D,3D glasses, zirconia, metal and non-metal special-shaped arc surfaces.



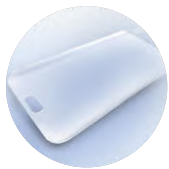
Classical Processing Parts



Cell phone cover



2.5D mobile phone glass



3D mobile phone glass

Features

- 1.Continuous polishing, loading/unloading when 3 workstations on processing, 1 workstation loading/unloading.
- 2.3sets of independent servo lifting processing workstation system to control upper disc loading position by motor current feedback.
- 3.Lower workstation rotation adopting variable frequency motor + worm gear reducer driving and column pin positioning.
- 4. Machine equipped vacuum gas-liquid separation device to monitor negative press with touch screen and PLC control .

Technical Parameters

ITEMS	Unit	Parameters
Workplace plate	mm	12×φ420
Polishing disc	mm	3×φ920
Upper disc lifting motor	kW	3×2.3
Lower disc rotation motor (VFD)	kW	4×2.2
Lower workpiece changeover motor (VFD)	kW	4.0
Polishing disc motor(VFD)	kW	3×5.5
Upper disc stroke	mm	200
Lower workstation rotation speed	rpm	0-10
Lower disc rotation speed	rpm	0-40
Polishing disc rotation speed	rpm	0-280
Air pressure	Mpa	0.6
Vacuum pressure	Kpa	-75
Voltage	V	3 phases 5 lines AC380V
Power	kW	36
Weight	kg	4900
Size	mm	2540×2540×2600

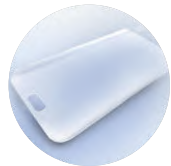
YH2M8608

Concave Surface Polishing Machine

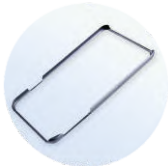
Used for 2.5D/3D cellphone glass polishing.



Classical Processing Parts



3D mobile phone glass



Concave mobile phone frame



Concave watch case

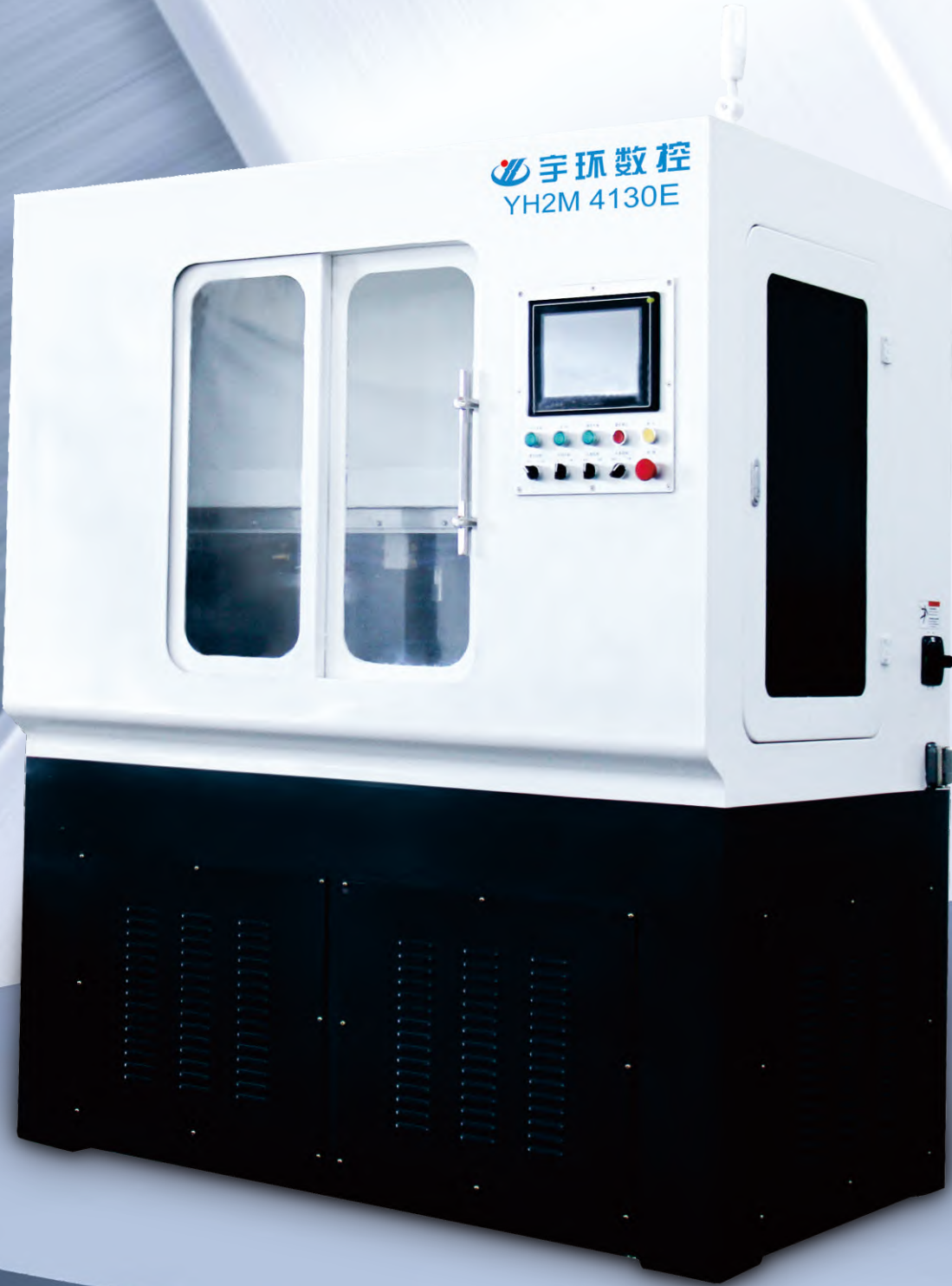
Features

- 1.C/X/Y/Z 4 shafts linkage function realized glass polishing of concave cavity interpolation.
- 2.Soft polishing head solves the impact of polishing head loss by equipping floating side/ longitudinal push cylinder.
- 3.Equipped vacuum gas-liquid separation device to realize monitoring negative press in real time, controlled by touch screen and PLC.

Technical Parameters

Items	Unit	Parameters
Maximum workpiece processing diameter	mm	8inch (diagonal)
Arc edge polishing head amount	Pcs	12
Large concave surface polishing head amount	Pcs	12
Polishing head rotation speed	rpm	100-1500
Workpiece amount of polishing one time	Pcs	12
Efficiency	min/disc	20-24 (100-120S/Pcs)
Workstation size	mm	1220×280
Loading/Unloading Mode		Robots
Cooling system		Cooling cycle
Accuracy of Filter	μm	6
Weight	kg	3000
Size	mm	2080×1800×2400

05/CNC Special Polishing Machine Series



YH2M4130E

Edge Polishing Machine

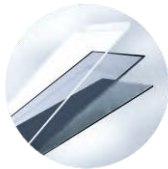
Suitable for thin sheet parts multi sides polishing and molding of non-metal brittle hard materials such as glasses, sapphire etc.



Classical Processing Parts



Ceramic cover plate for mobile phone



Glass



Sapphire

Features

- 1.Side polishing machine SPM adopted stacking installation pressed by cylinder.
- 2.Left and right polishing head simultaneously CNC profile polishing workpiece, lifting movements makes the workpiece evenly.
- 3.Servo control driven, using touch screen and PLC to control.

Technical Parameters

Items	Unit	Parameters
Polishing head size (OD×H)	mm	φ290*235
Workpiece maximum size	mm	300(Diagonal, and side length≥60)
Maximum thickness of workpiece	mm	180
Polishing head rotation speed	rpm	50-1500
Workpiece rotation speed	rpm	0.5-3
Polishing head lifting speed	mm/min	5-350
Polishing head Power	kW	3
Polishing head rotation motor power	kW	1.5
Polishing head lifting motor power	kW	0.4
Polishing head moving motor power	kW	0.4
Polishing head amounts	No.	2
Weight	kg	2500
Size (L×W×H)	mm	1800×1250×2150

YH2M8169

3DMagnetic Polishing Machine

Mainly used for 3D precision polishing of non-magnetic materials like aluminum alloy, glasses, sapphire, stainless steel etc.



Classical Processing Parts



Optical glass



Sapphire

Features

- 1.The magnetic flow polishing machine uses electromagnetic field magnetization to polish the workpiece with magnetorheological fluids.
- 2.Workpiece is clamped on 6 Dual freedom manipulator on orbit rotation disc.
- 3.Adopts low-voltage magnetic field, which has high safety and the magnetic induction can be programmed.
- 4.Magnetic field and polishing fluid temperature can be controlled by special cooling system.
- 5.PLC+ touch screen interface.

Technical Parameters

ITEMS	Unit	Parameters
workstation	No.	6
Maximum workpiece size	mm	165 (Diagonal) ×40 (H)
Polishing disc size	mm	φ630
Upper disc rotation speed	rpm	3-85
Workpiece rotation speed	rpm	3-62
Robots swing angle	°	-5°-12°
Upper disc motor power	kW	3
Robots swing motor power	kW	0.4
Manipulator rotation motor power	kW	0.1
Size (L×W×H)	mm	1800×2800×2600
Weight	kg	2800

06/

Curved Surface Polishing Machine



YH2M8519B/3/4/5

5-Axis CNC Multi-Station Polishing Machine

Mainly used for polishing complex surface such as arc surface and side edge, such as 3D surface of glass, ceramics, sapphire, metal, plastic, carbon fiber board and other materials.



Classical Processing Parts



Mobile Phone



watch



laptop cover



e-cigarette case



VR glasses



car rearview mirror

3C products exterior structural parts such as mobile phones, watches, laptops, tablet computers, electronic cigarettes, smart wearables, etc.; Exterior structural parts such as car door handles, cab interior trims, signs, keys, etc.;Exterior structural parts like Bluetooth speakers, high-grade thermos cups and other household products.

Features

- 1. 5-axis linkage, processing multiple workpieces one time, fixed by vacuum fixture, precisely positioning, reliable, efficiency.
- 2. Polishing head is driven by servo motor, precisely control rotation speed, and constant torque output.
- 3. Realize rough polishing, lapping, brushing, fine polishing forms in one-time, high yield and good consistency.

Items	Unit	YH2M8519B/3	YH2M8519B/4	YH2M8519B/5
Voltage	V	AC 380V,50/60Hz	AC 380V,50/60Hz	AC 380V,50/60Hz
Pressure	Mpa	0.5~0.7	0.5~0.7	0.5~0.7
X axis stroke	mm	500	500	500
Y axis stroke	mm	600	600	600
Z axis stroke	mm	530	530	530
A axis stroke	°	-30° ~ +360°	-30° ~ +360°	-30° ~ +360°
Power	kW	15	15	15
Size (L×W×H)	mm	2400×2580×2200	2400×2580×2200	2400×2250×2200
Weight	kg	3200	3200	3100
Workpiece speed	r/min	1-50	1-50	1-50
Servo linkage amount	/	5	5	5
Polishing head rotation speed	r/min	0-5000	0-5000	0-5000
Polishing head group	group	group×3	group×4	group×5
Workpiece center distance	mm	500	500	250
Workpiece processing Range	mm	Diagonal length≤498	Diagonal length ≤498	5 stations : Diagonal length≤248 3 stations: Diagonal length≤495

YHJ2MK8512

5-Axis CNC Multi-Station Polishing Machine

Mainly used for polishing complex surface such as arc surface and side edge, such as 3D surface of glass, ceramics, sapphire, metal, plastic, carbon fiber board and other materials.
Equipped with automatic consumables replacement system.



Classical Processing Parts



Mobile Phone



watch



laptop cover



e-cigarette case



hair dryer



magnetic charger

3C products exterior structural parts such as mobile phones, watches, laptops, tablet computers, electronic cigarettes, smart wearables, etc.; Exterior structural parts such as car door handles, cab interior trims, signs, keys, etc.;Exterior structural parts like Bluetooth speakers, high-grade thermos cups and other household products.

Features

- 1.Five-axis linkage, with automatic replacement of consumables system, saving labor and high efficiency.
- 2.Process multiple workpieces at the same time, fixed by vacuum fixture, precise positioning and reliable.
- 3.It can realize rough polishing, medium polishing, fine polishing and form at one time, with good consistency and high yield

Technical Parameters

Items	Unit	Parameters
Voltage	V	AC 380V,50/60Hz
Pressure	Mpa	0.5~0.7
X-axis stroke	mm	530
Y-axis stroke	mm	940
Z-axis stroke	mm	485
A-axis stroke	°	-30° ~ +360°
C-axis stroke	°	-720° ~ +720°
Total installed power of machine tool	kW	288
Size (L×W×H)	mm	2950×2300×2200
Weight	kg	4700
Workpiece rotation speed	r/min	1-50
Servo linkage amount	/	5
Polishing head rotation speed	r/min	0-5000
Polishing head Diameter	mm	φ50-φ150
Polishing head groups	group	4group×5
Workpiece center distance	mm	5 stations: 250; 3stations: 500
Workpiece process range	mm	5stations: Diagonal length≤248; 3stations: Diagonal length≤498

Innovation
Leading Future